

**Sutter Roseville Medical Center Features:**

# **Patient Care Management In The MCI and HAZMAT ENVIRONMENT**

**Monday, August 17<sup>th</sup>, 2026**

**0900-1100**

**S-SV EMS Agency Conference Room**

**535 Menlo Drive, Suite A Rocklin CA**

**Sutter Roseville  
Medical Center**

**Emergency  
Department**

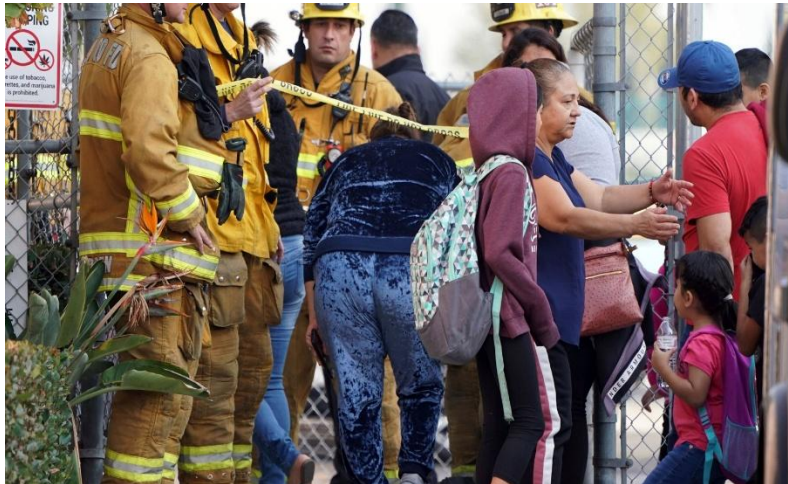
**Presented by**

**Dr. Bob Royer**

**&**

**Dr. Robinson**

**Taylor**



**To ensure adequate seating and refreshments  
Please RSVP to Debbie Madding: [Deborah.Madding@sutterhealth.org](mailto:Deborah.Madding@sutterhealth.org)  
Include license or certificate number if you wish to claim CE credit**

***Paramedic/EMT Education hours:*** 2.0 hrs CE; provider # 65-0014

***CONTINUING EDUCATION:*** This program is offered by a CS Board of Registered Nursing Accredited Sponsor, Continuing Education Provider Number CEP 442. Successful participants may report 2 hours of continuing education. No partial credit