



Hypothermia & Avalanche/Snow Immersion Suffocation Resuscitation

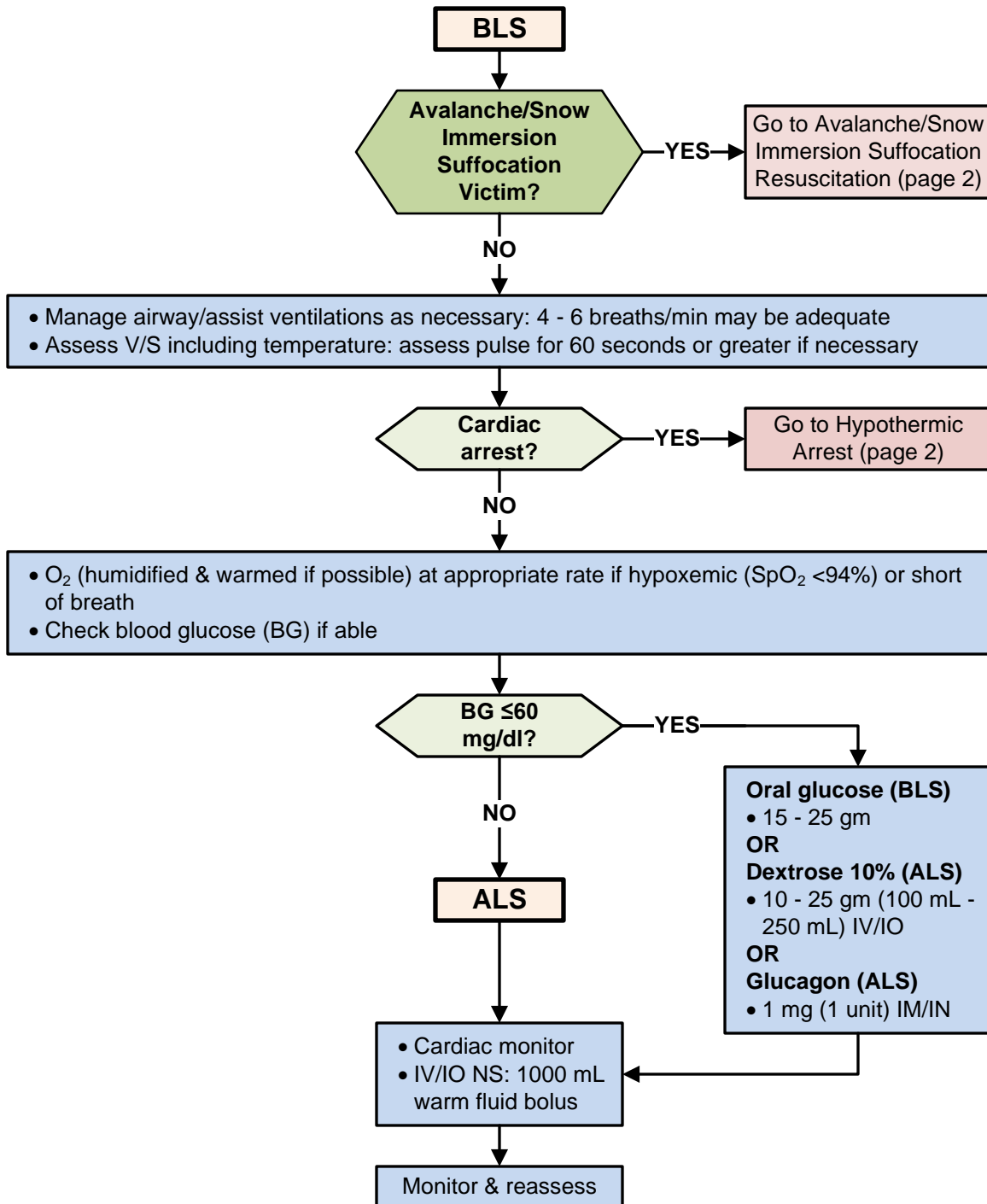
Approval: Troy M. Falck, MD – Medical Director

Effective: 06/01/2024

Approval: John Poland – Executive Director

Next Review: 01/2027

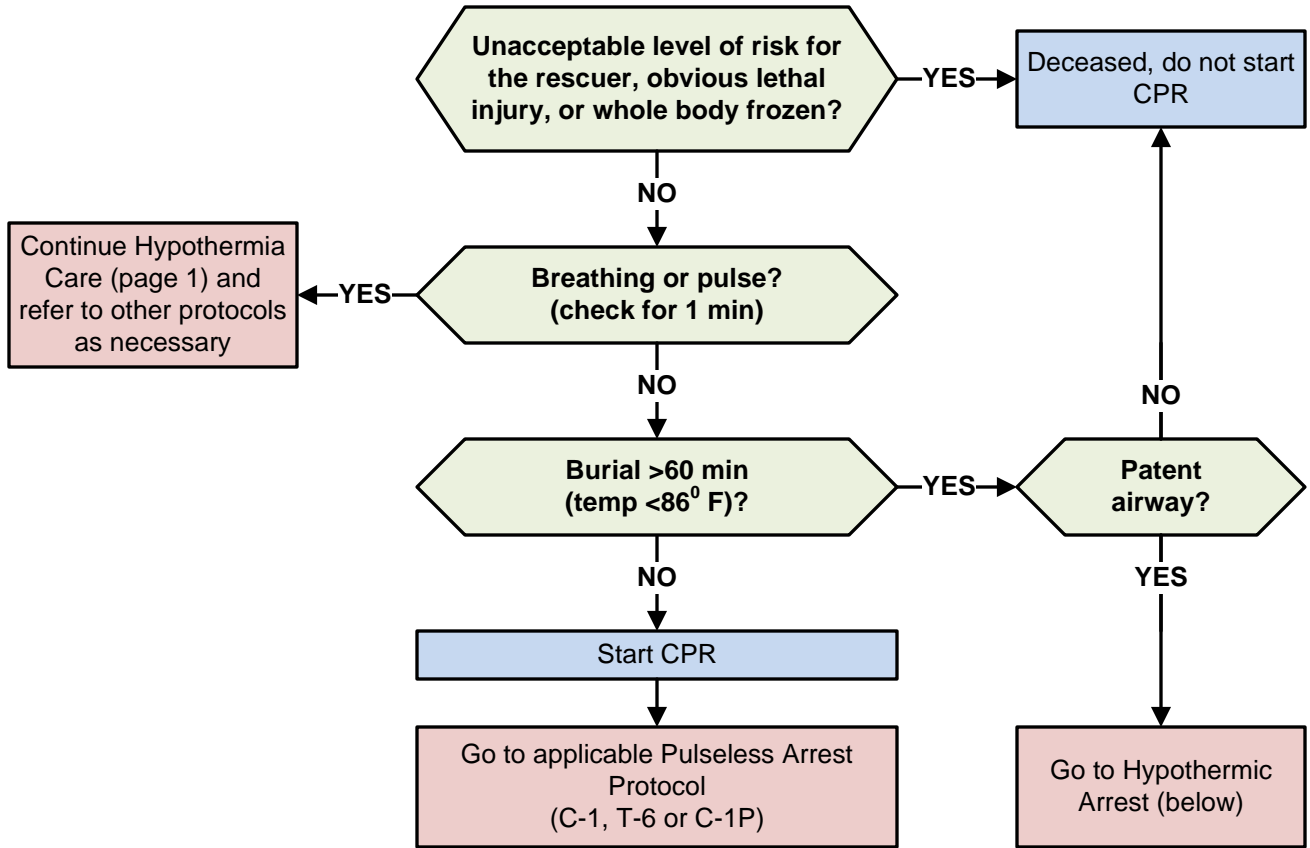
- Move pt to a warm environment, remove wet clothing, begin warming measures as soon as possible.
- Moderately & severely hypothermic pts should be handled as gently as possible.
- This protocol incorporates the official guidelines for the onsite treatment of avalanche victims established by the International Commission for Alpine Rescue (ICAR).





Hypothermia & Avalanche/Snow Immersion Suffocation Resuscitation

Avalanche/Snow Immersion Suffocation Resuscitation



Hypothermic Arrest

- Medications & defibrillation may be ineffective in a hypothermic cardiac arrest pt. If the pt is in v-fib, one shock & one round of medications should be delivered. It is reasonable to delay further defibrillation attempts & further medications until the pt is rewarmed.
- Continuing CPR & safe expedited transport to the nearest facility is the pt's best chance at survival.

