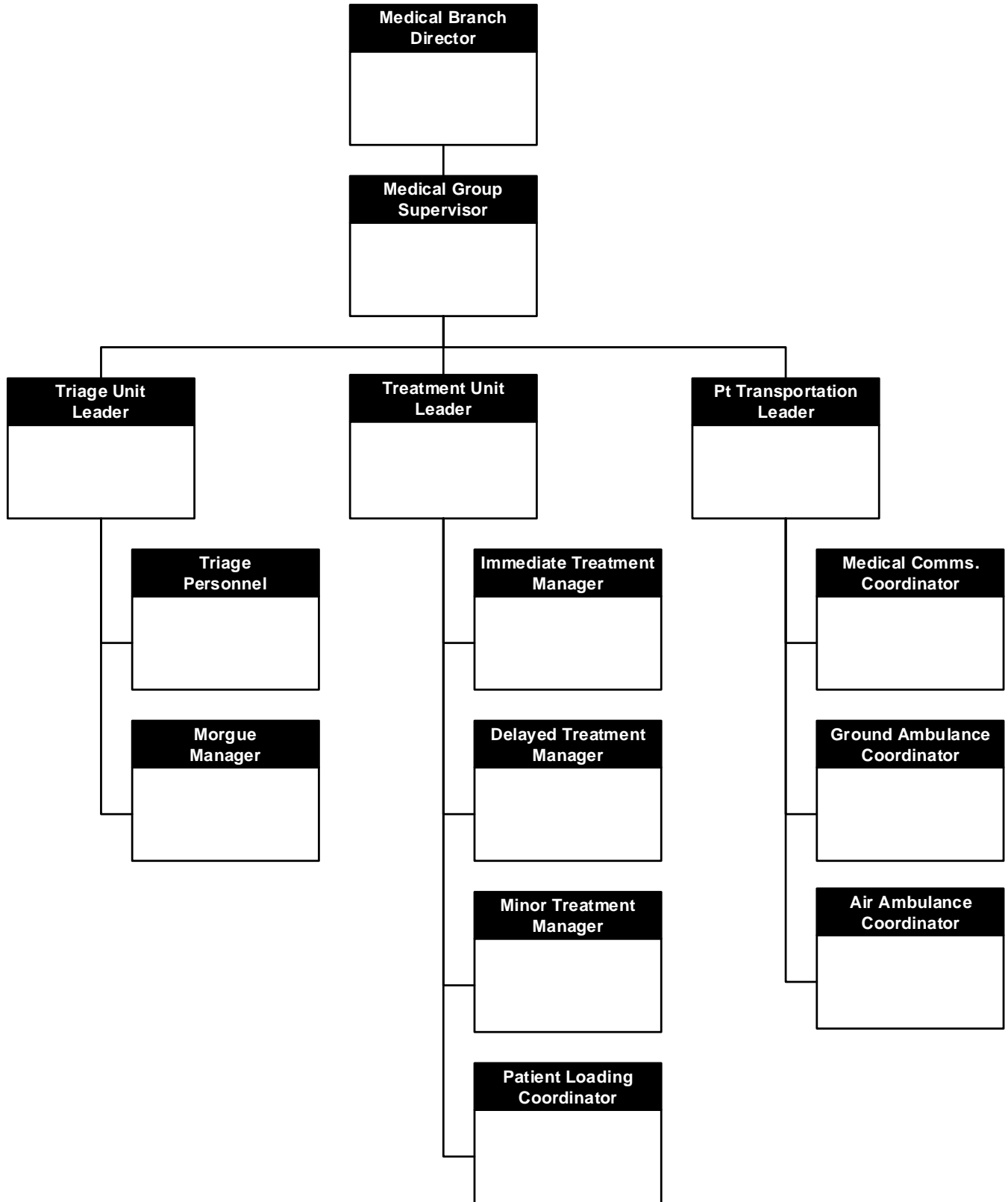




MCI MEDICAL BRANCH ORGANIZATIONAL CHART





MCI MEDICAL BRANCH ORGANIZATIONAL CHART NOTES

- Positions are assigned based on incident size and personnel qualifications.
- The Medical Branch Director is typically only assigned on larger incidents.
- Smaller incidents may only utilize a Medical Group Supervisor and Triage Unit Leader, who are also responsible for Treatment Unit and Patient Transportation Unit duties.

MCI MEDICAL BRANCH PRIMARY TASK CHECKLIST

Task	Completed
1. Ensure Control Facility (CF) MCI notification (including pre-alert if applicable)	
2. Check in with the Incident Commander (IC) and establish Medical Command	
3. Establish appropriate roles/functions (Triage, Treatment, Transportation)	
4. Utilize appropriate MCI vests for identification	
5. Order additional transport/medical resources through the IC	
6. Ensure that triage tags are applied to all patients prior to transport	
7. Maintain adequate CF communications to ensure appropriate patient distribution	
8. Utilize the patient tracking worksheet to adequately track all patients	

Notes