



SIERRA - SACRAMENTO VALLEY
EMERGENCY MEDICAL SERVICES AGENCY

Serving Butte, Colusa, Glenn, Nevada, Placer, Shasta, Siskiyou, Sutter, Tehama, and Yuba Counties



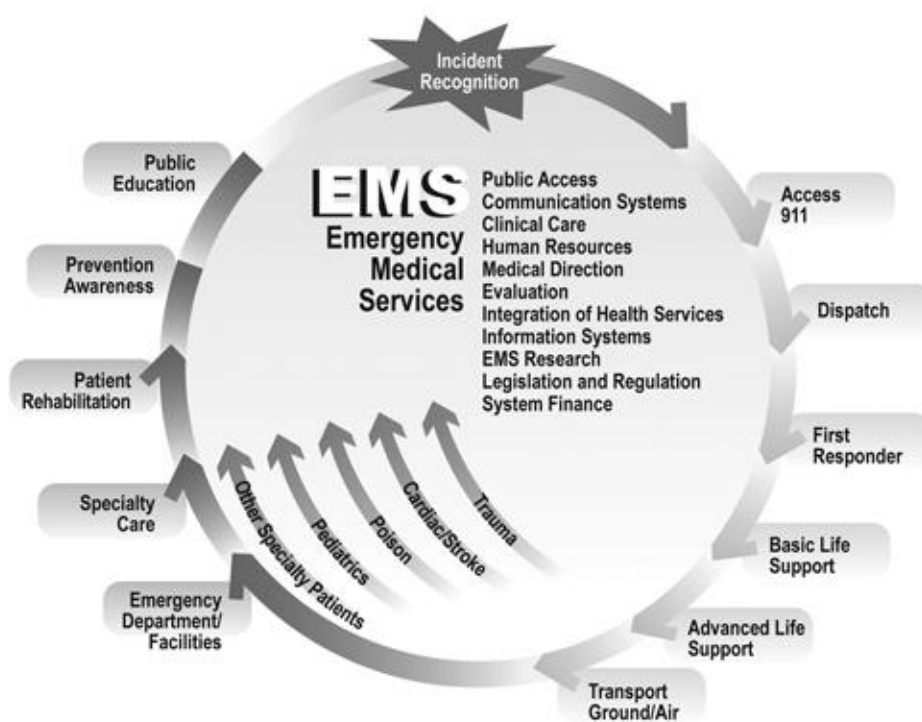
S-SV EMS 2020 REGIONAL GROUND EMS QI REPORT DATA THROUGH OCTOBER 31, 2020

“Quality is never an accident; it is always the result of high intention, sincere effort, intelligent direction and skillful execution; it represents the wise choice of many alternatives.” – William A. Foster

TABLE OF CONTENTS

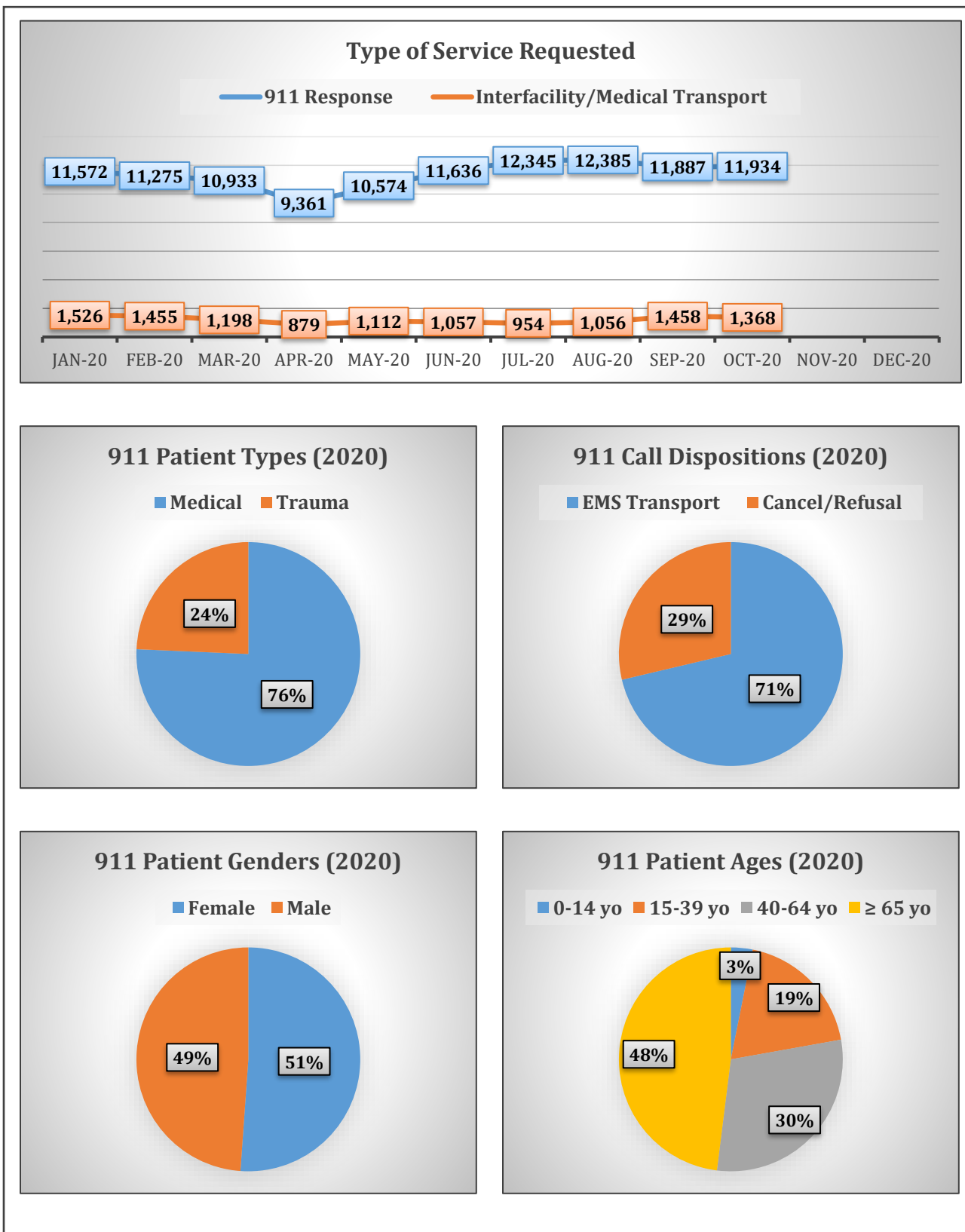
Contents

| | |
|--|---|
| Ground EMS Response Call Data _____ | 1 |
| EMS Specialty Patient Data _____ | 2 |
| EMS Medication & Procedure Utilization _____ | 4 |
| S-SV EMS Contact Information _____ | 8 |



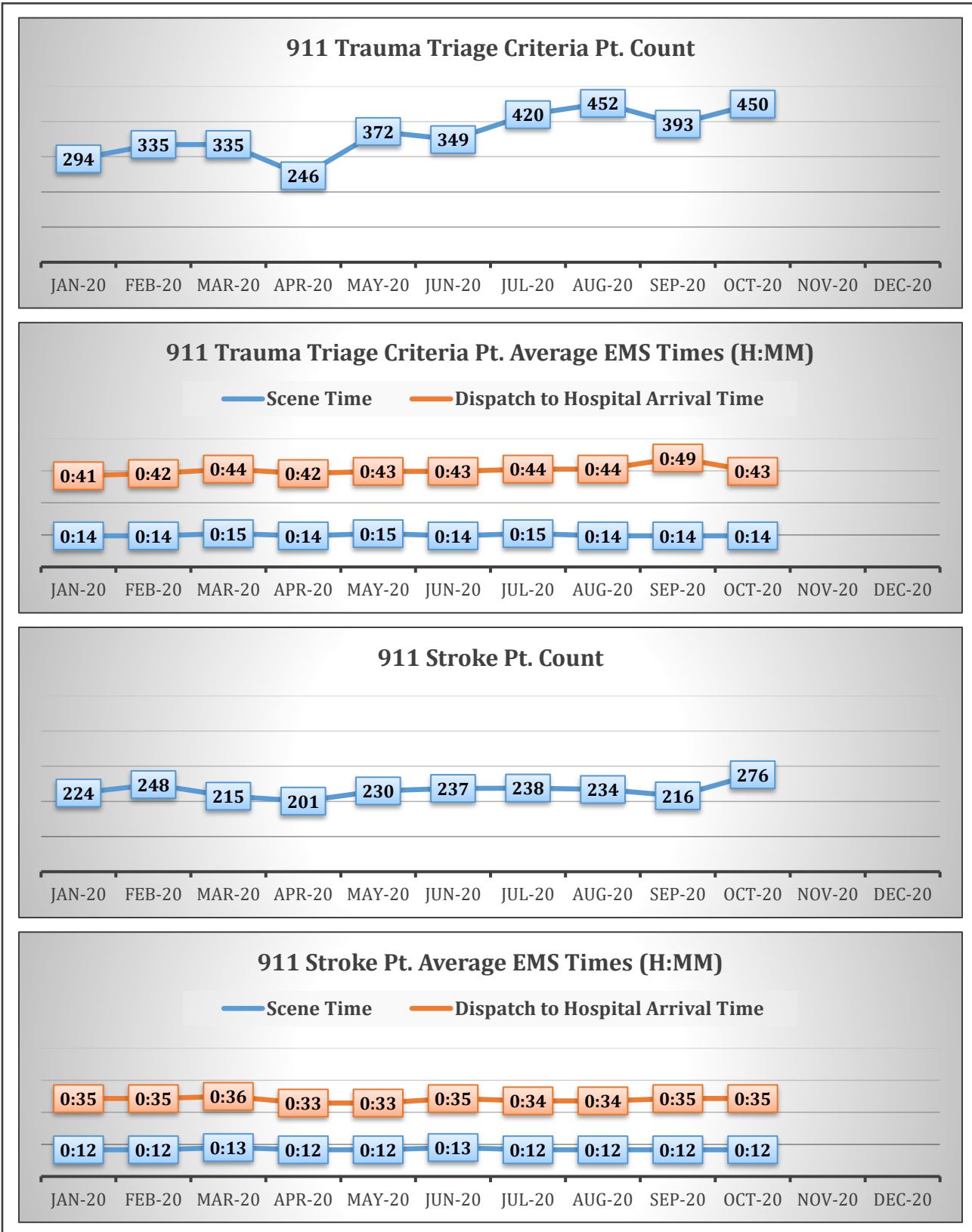
GROUND EMS RESPONSE CALL DATA

Ground EMS Response Call Data



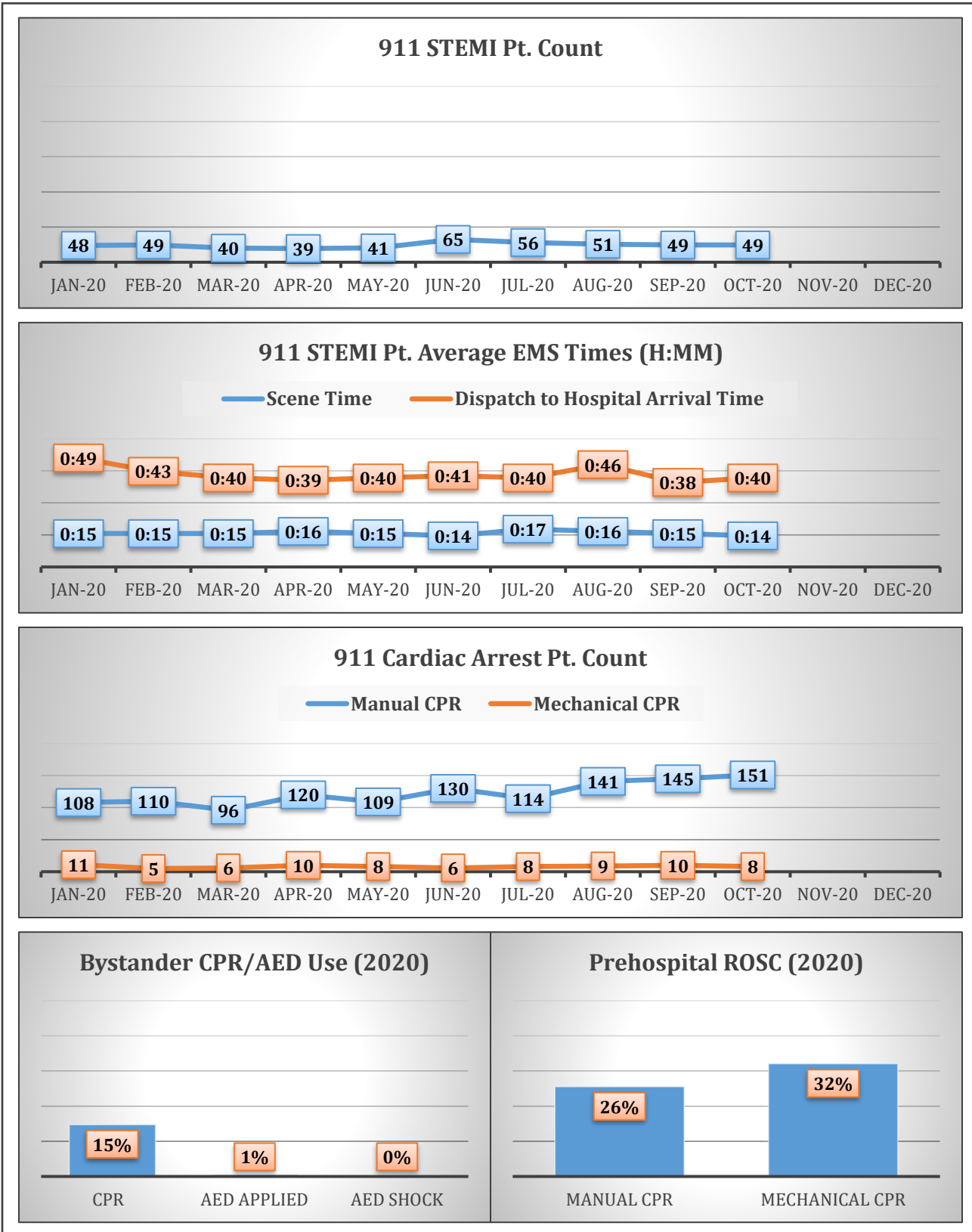
EMS SPECIALTY PATIENT DATA

EMS Specialty Patient Data



EMS SPECIALTY PATIENT DATA

EMS Specialty Patient Data (continued)



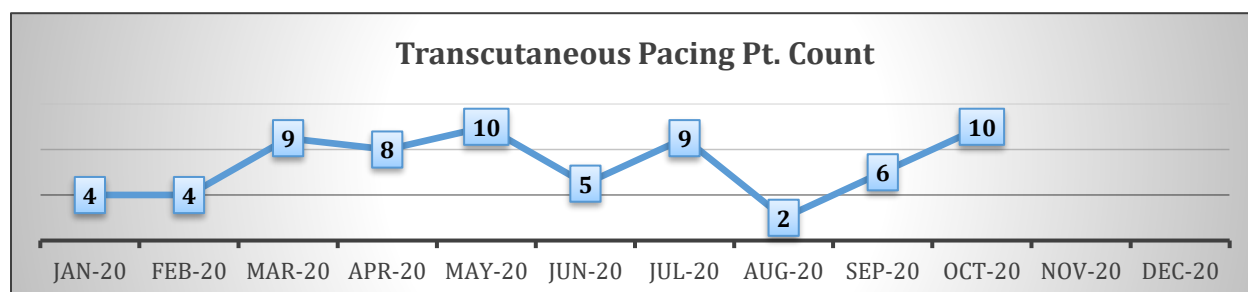
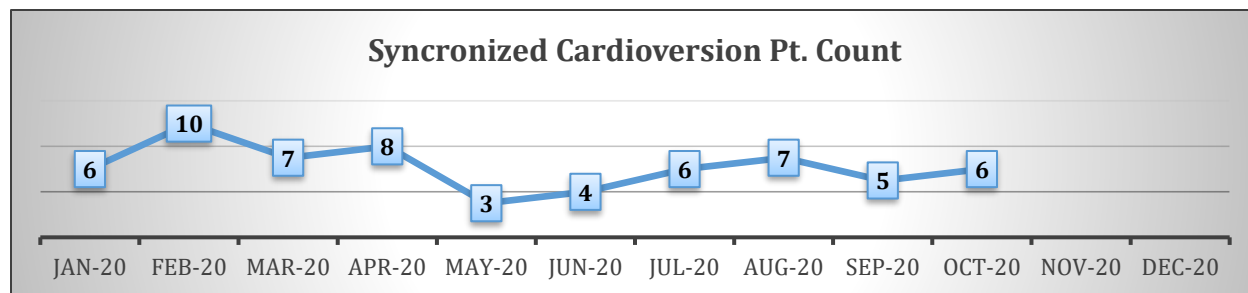
EMS MEDICATION & PROCEDURE UTILIZATION

EMS Medication & Procedure Utilization

911 Patient Medication Administration Count and % (2020)

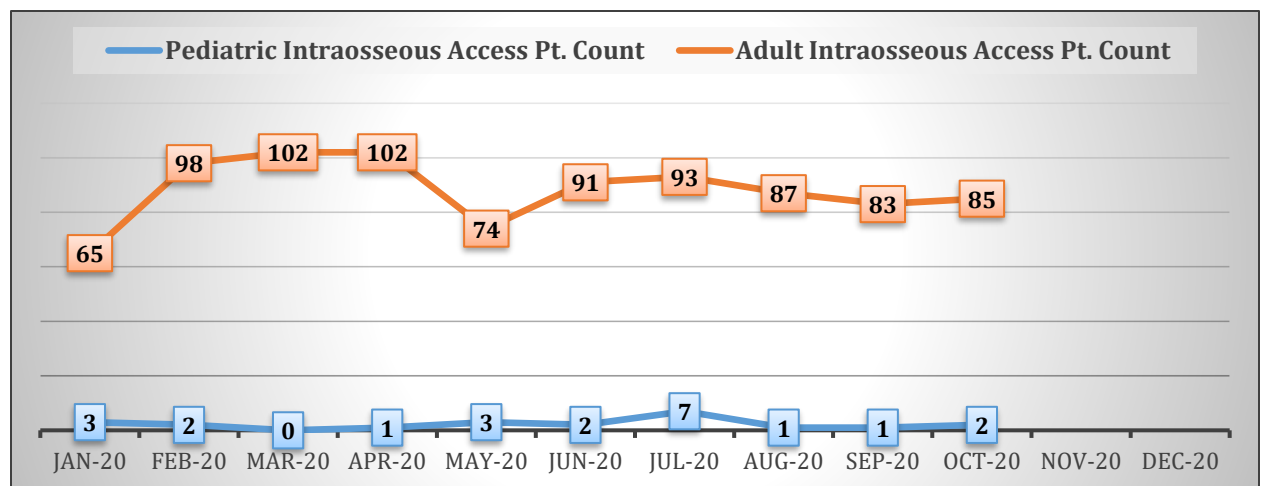
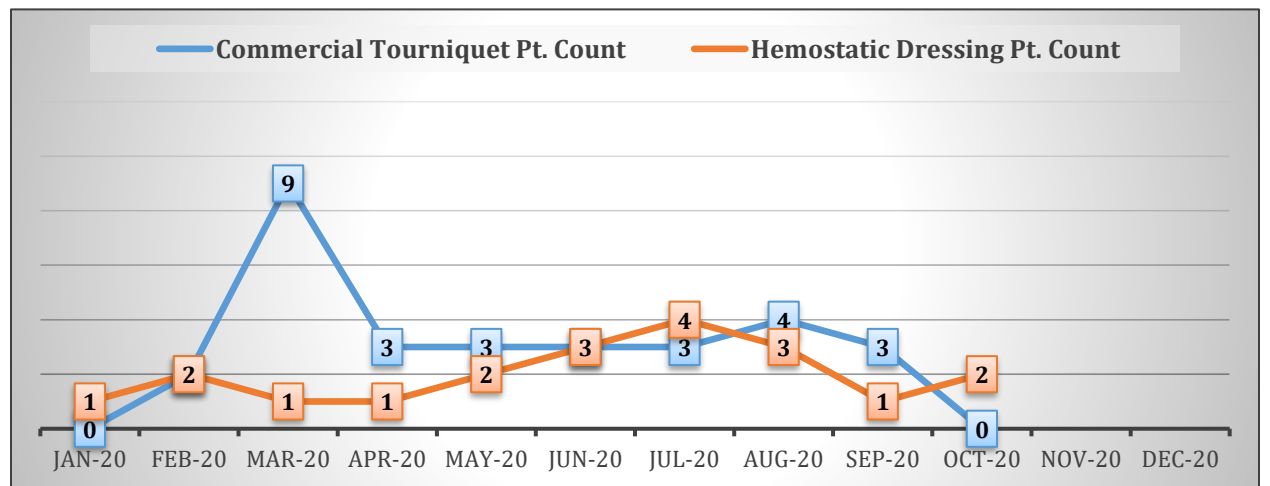
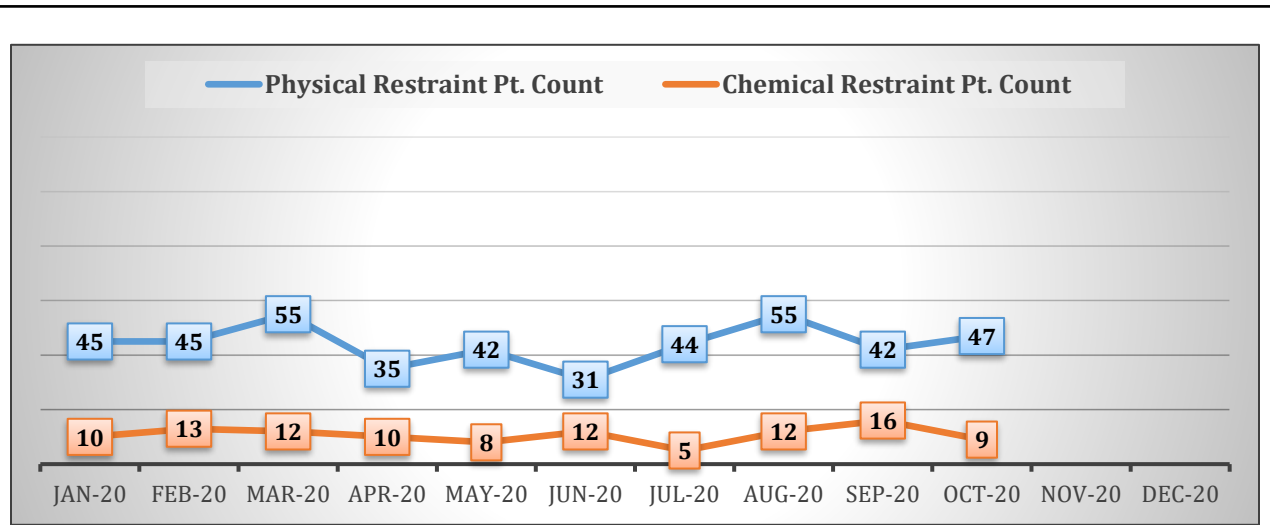
| Medication | Count | % | Medication | Count | % |
|----------------------|-------|--------|----------------|-------|--------|
| Acetaminophen (IV) | 61 | 0.15% | Glucagon | 161 | 0.41% |
| Activated Charcoal | 49 | 0.12% | Ipratropium | 2740 | 6.92% |
| Adenosine | 219 | 0.55% | Ketamine | 223 | 0.56% |
| Albuterol | 3110 | 7.85% | Ketorolac | 76 | 0.19% |
| Amiodarone | 202 | 0.51% | Lidocaine | 62 | 0.16% |
| Aspirin | 4434 | 11.20% | Midazolam | 827 | 2.09% |
| Atropine | 148 | 0.37% | Morphine | 929 | 2.35% |
| D10% | 61 | 0.15% | Naloxone | 1057 | 2.67% |
| D50% | 837 | 2.11% | Nitroglycerin | 6516 | 16.45% |
| Diphenhydramine | 372 | 0.94% | Ondansetron | 7936 | 20.04% |
| Epinephrine 1:1,000 | 217 | 0.55% | Sodium Bicarb. | 61 | 0.15% |
| Epinephrine 1:10,000 | 3568 | 9.01% | TXA | 14 | 0.04% |
| Fentanyl | 5721 | 14.45% | | | |

Procedures Performed Patient Count



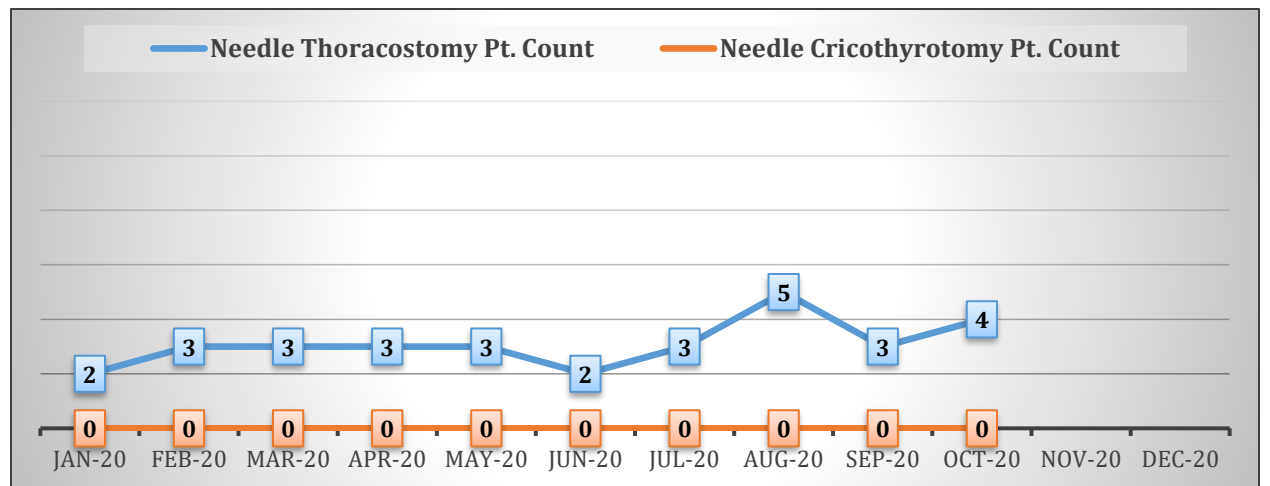
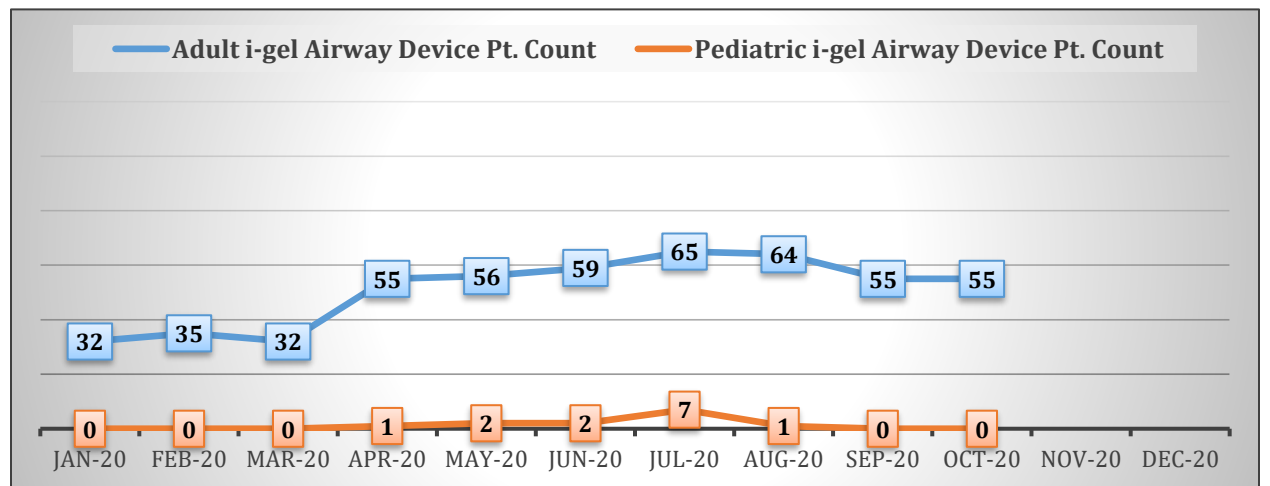
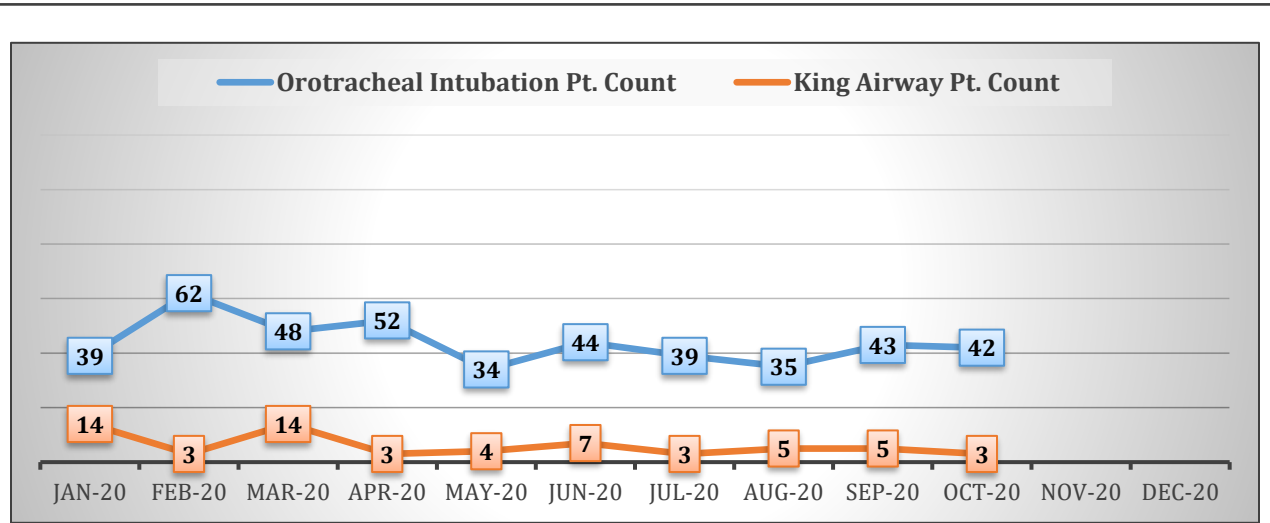
EMS MEDICATION & PROCEDURE UTILIZATION

EMS Medication & Procedure Utilization (continued)



EMS MEDICATION & PROCEDURE UTILIZATION

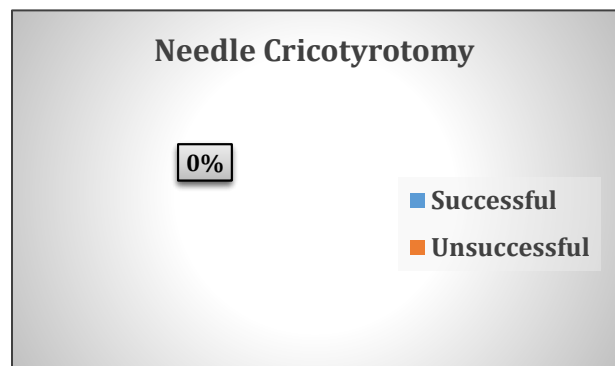
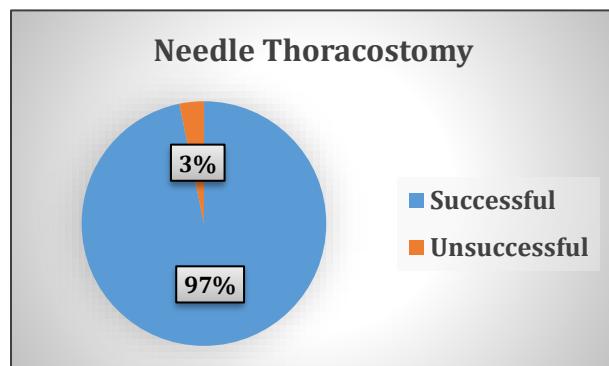
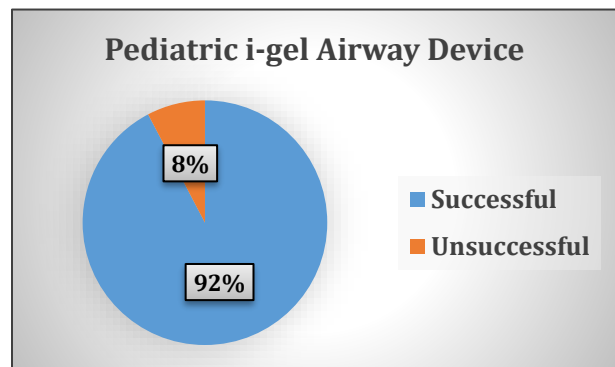
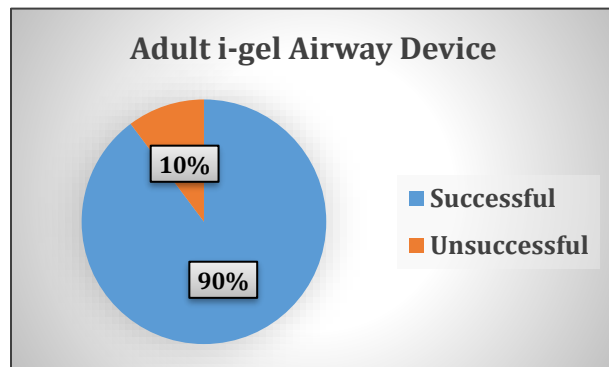
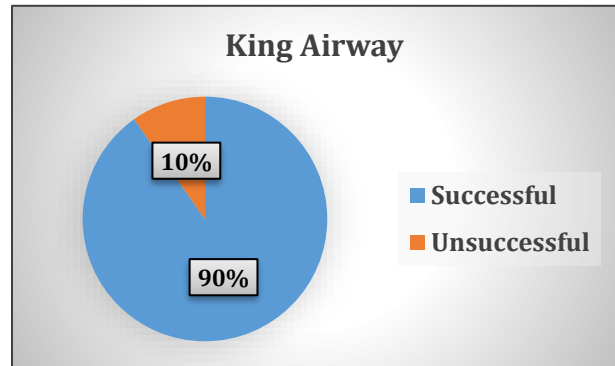
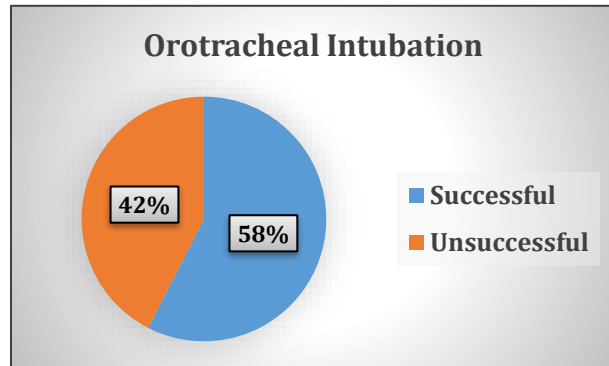
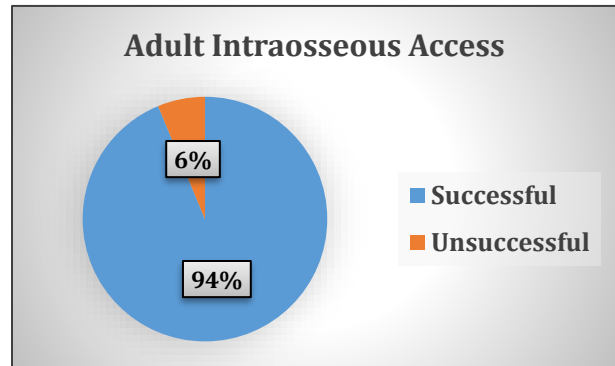
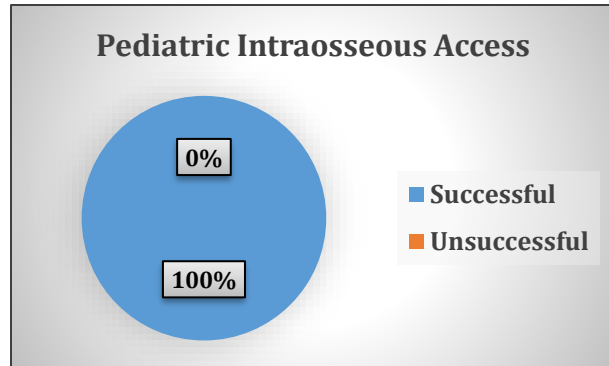
EMS Medication & Procedure Utilization (continued)



EMS MEDICATION & PROCEDURE UTILIZATION

EMS Medication & Procedure Utilization (continued)

Procedure Success Rates (2020)



S-SV EMS CONTACT INFORMATION

S-SV EMS Contact Information

Sierra – Sacramento Valley Emergency Medical Services Agency

www.ssvems.com

535 Menlo Drive, Suite A
Rocklin, CA 95765
(916) 625-1702

