



**Pediatric Respiratory Distress – Wheezing**

Approval: Troy M. Falck, MD – Medical Director

Effective: 12/01/2017

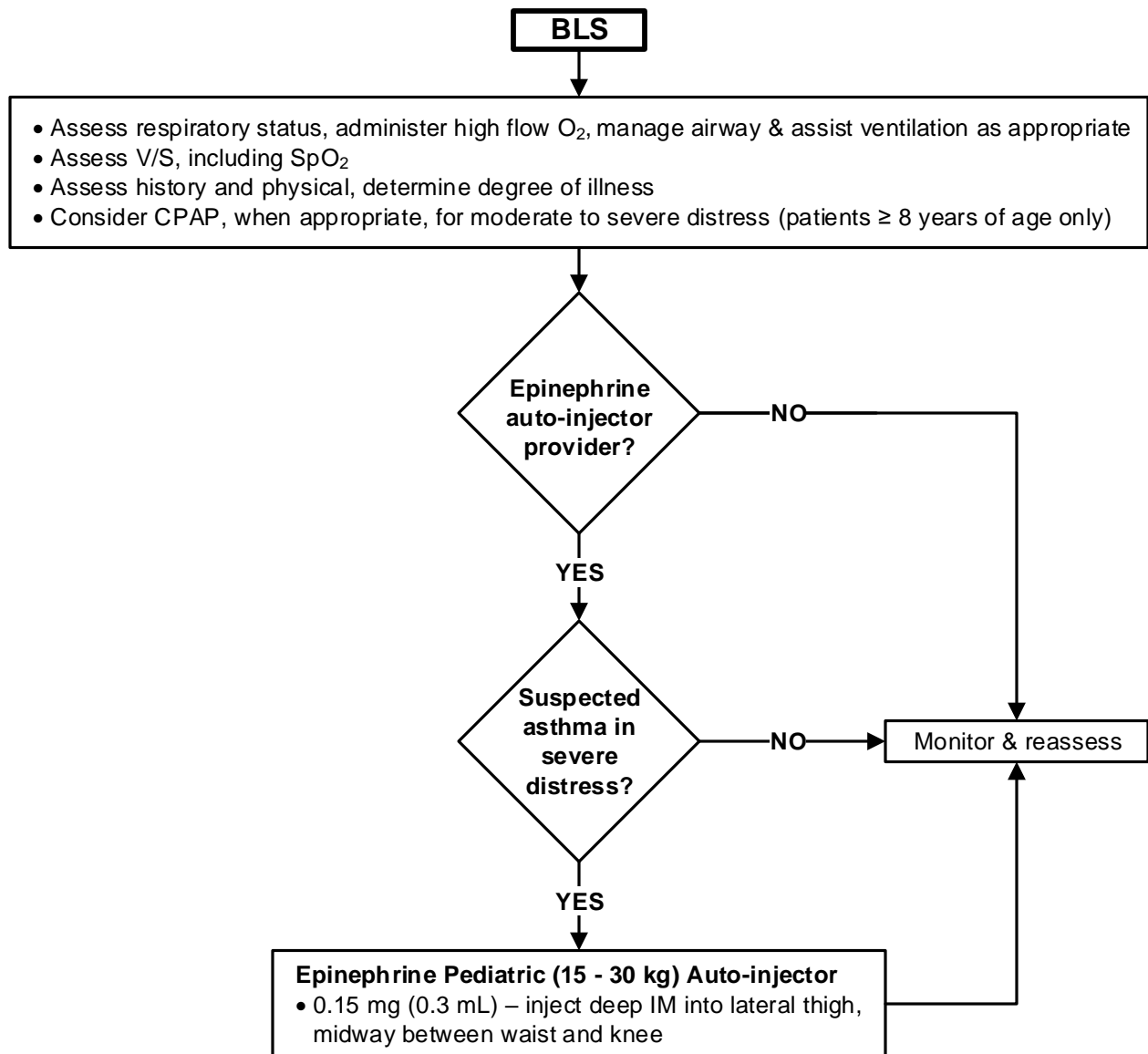
Approval: Victoria Pinette – Executive Director

Next Review: 09/2020

- Refer to Adult Respiratory Distress Treatment Protocol (R-3) for continuous positive airway pressure (CPAP) indications, contraindications and complications information
- Consider respiratory failure with a history of increased work of breathing and presenting with ALOC and a slow or normal respiratory rate without retractions
- Do not attempt to visualize the throat or insert anything into the mouth if epiglottitis suspected

**EMT Epinephrine Auto-Injector Administration Criteria (epinephrine auto-injector optional skills providers only)**

- Candidates for administration of auto-injector epinephrine by authorized EMT personnel are patients with suspected asthma, in severe distress (**auto-injector epinephrine for asthma is not authorized for PSFA or EMR personnel**)



**See page 2 for ALS treatment**



**Pediatric Respiratory Distress – Wheezing**

**LALS**

**Mild Distress**

- Mild wheezing
- Mild shortness of breath
- Cough

**Moderate – Severe Distress**

- Cyanosis
- Accessory muscle use
- Inability to speak > 3 words
- Severe wheezing/shortness of breath
- Decreased or absent air movement

Cardiac monitor (AEMT II ONLY)

Cardiac monitor (AEMT II ONLY)

**Albuterol 5 mg via nebulizer**

- May repeat if respiratory distress continues

IV/IO NS (may bolus 20 mL/kg)

**Albuterol 5 mg via nebulizer, CPAP, or BVM**

- May repeat if respiratory distress continues

Monitor & reassess

**Epinephrine 1:1,000 (for severe distress only)**

- 0.01 mg/kg IM (max dose = 0.3 mg)