



Allergic Reaction/Anaphylaxis

Approval: Troy M. Falck, MD – Medical Director

Effective: 12/01/2017

Approval: Victoria Pinette – Executive Director

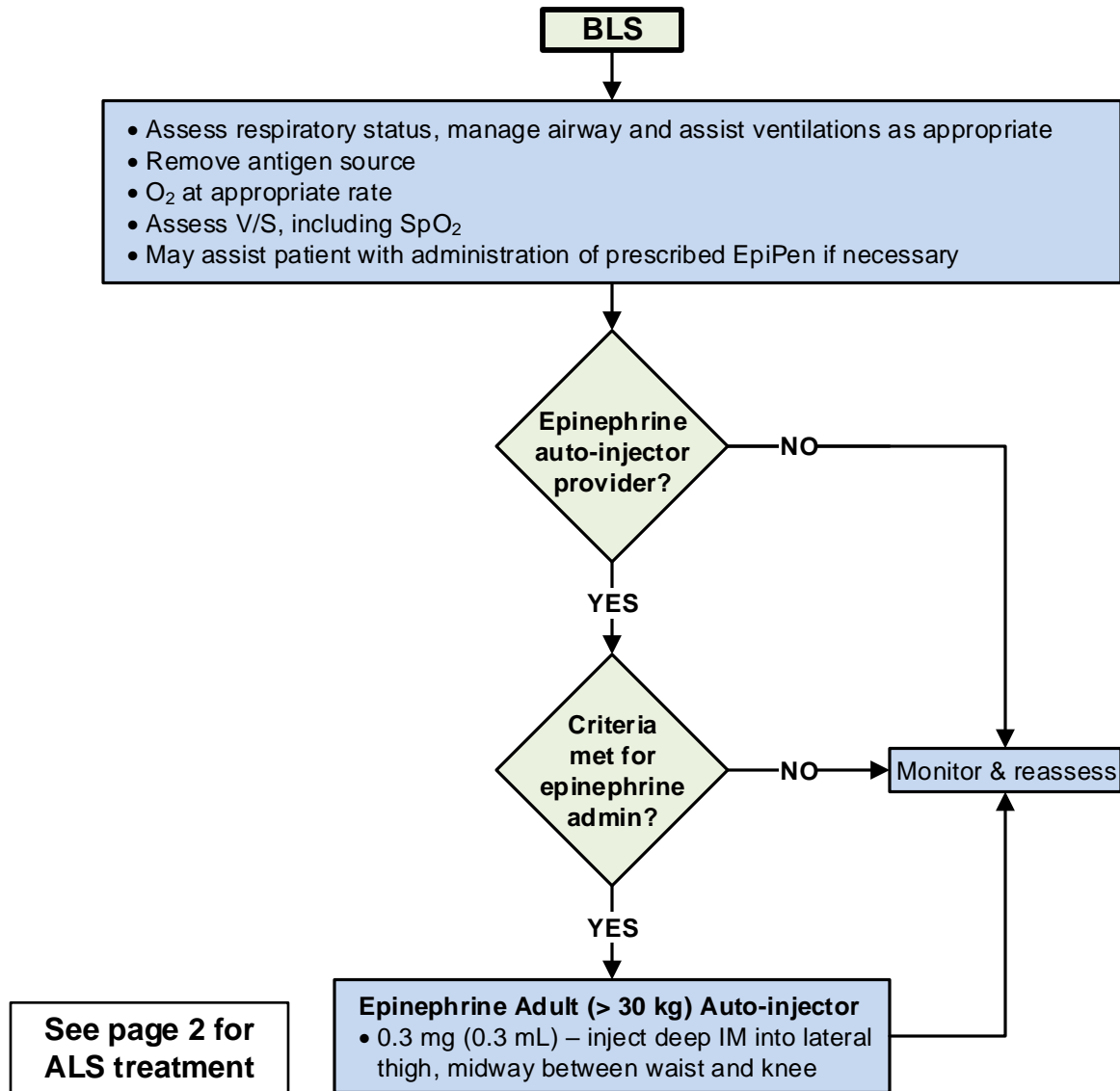
Next Review: 07/2020

- **Allergic reaction:** Sensitivity to an allergen causing hives, pruritus, flushing, rash, nasal congestion, watery eyes, and/or angioedema not involving the airway
- **High-risk allergic reaction:** Allergic reaction with a history of anaphylaxis, or significant exposure with worsening symptoms
- **Anaphylaxis:** Severe allergic reaction with 1 or more of the following: respiratory distress, bronchospasm/wheezes/diminished breath sounds, hoarseness, stridor, edema involving the airway, hypotension (SBP < 90)
- **In extremis:** Anaphylaxis with 1 or more of the following: airway compromise, altered mental status, SBP < 70

Epinephrine Auto-Injector Administration Criteria (approved epinephrine auto-injector optional skills providers)

- Candidates for the administration of auto-injector epinephrine by authorized PSFA, EMR, or EMT personnel are patients in severe distress, who have one or more of the anaphylaxis symptoms listed above

Epinephrine should be used cautiously in patients > 35 years old, or with a history of CAD or HTN





Allergic Reaction/Anaphylaxis

