

SIERRA SACRAMENTO VALLEY EMS AGENCY

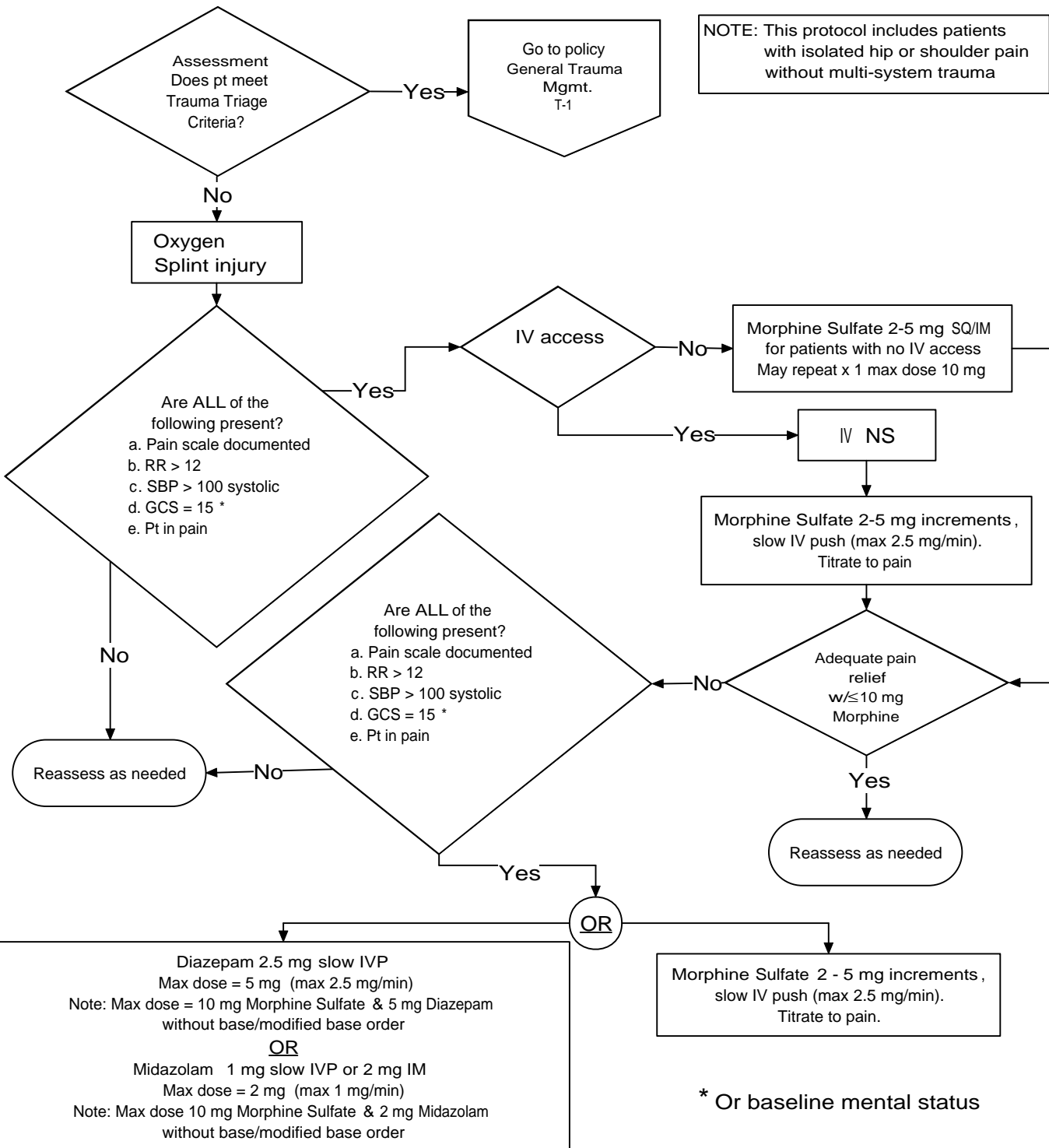
ALS PROTOCOL- MEDICAL EMERGENCY

TRAUMA

REFERENCE NO. T-6

SUBJECT: ISOLATED EXTREMITY INJURY - INCLUDING HIP OR SHOULDER INJURIES

NOTE: This protocol includes patients with isolated hip or shoulder pain without multi-system trauma



* Or baseline mental status

Effective Date: 01/01/08

Next Review Date: 07/10

Approved by:

Date last reviewed revised: 12/07

Page 1 of 1

William J. Koenig, MD

S-SV EMS Medical Director

Victoria Pinette

S-SV EMS Regional Executive Director