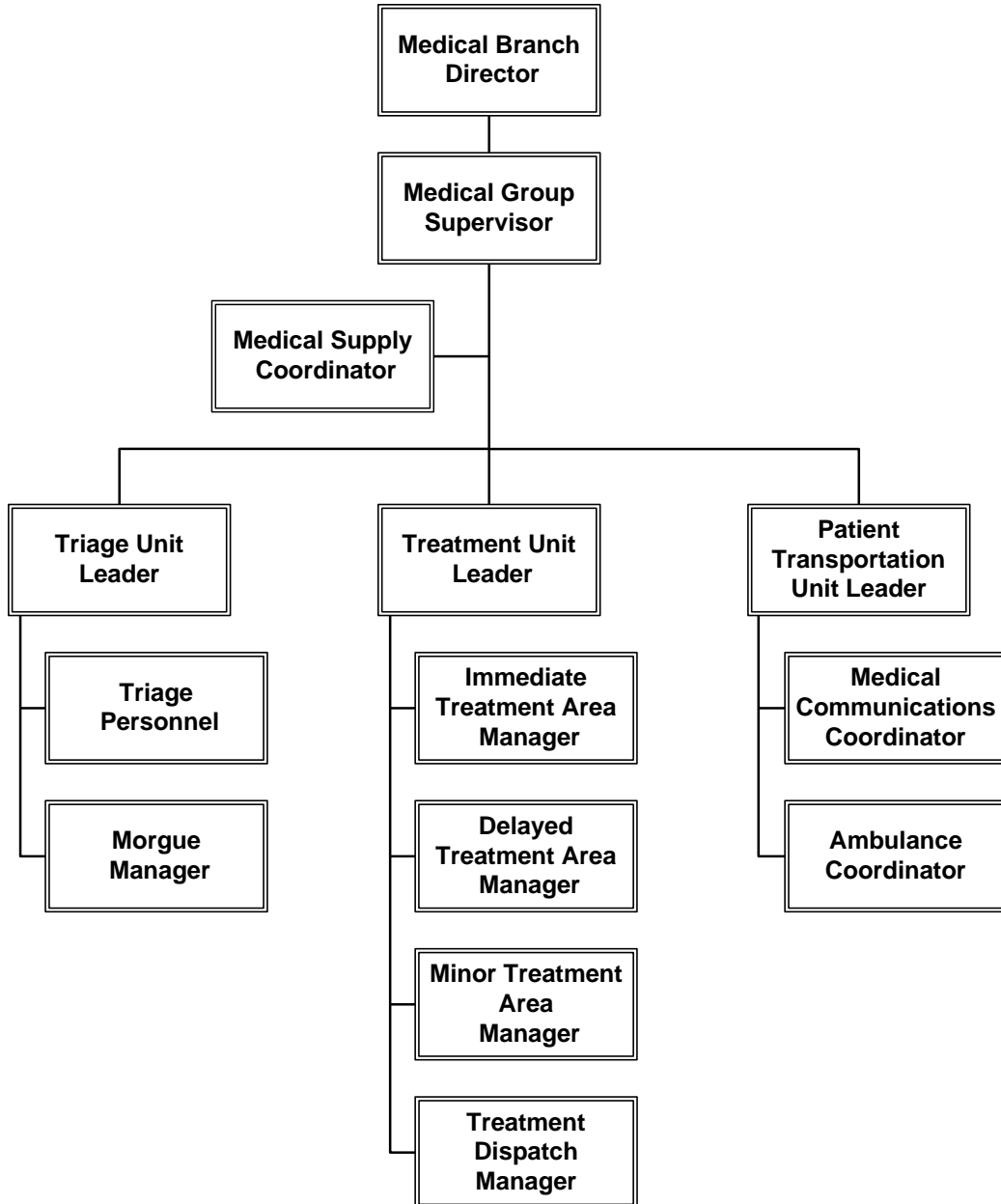


SIERRA-SACRAMENTO VALLEY EMS AGENCY PROGRAM POLICY

REFERENCE NO. 837-B

SUBJECT: MCI – ORGANIZATIONAL CHART

Full Multi-Casualty Organization



- The number and type of positions filled is based on the size of the incident. Smaller incidents may only require a Triage Unit Leader, and a Medical Group Supervisor who also performs the functions of Treatment Unit Leader and Patient Transportation Unit Leader.
- Positions should be filled based on the individual's qualifications to adequately perform the assigned function.