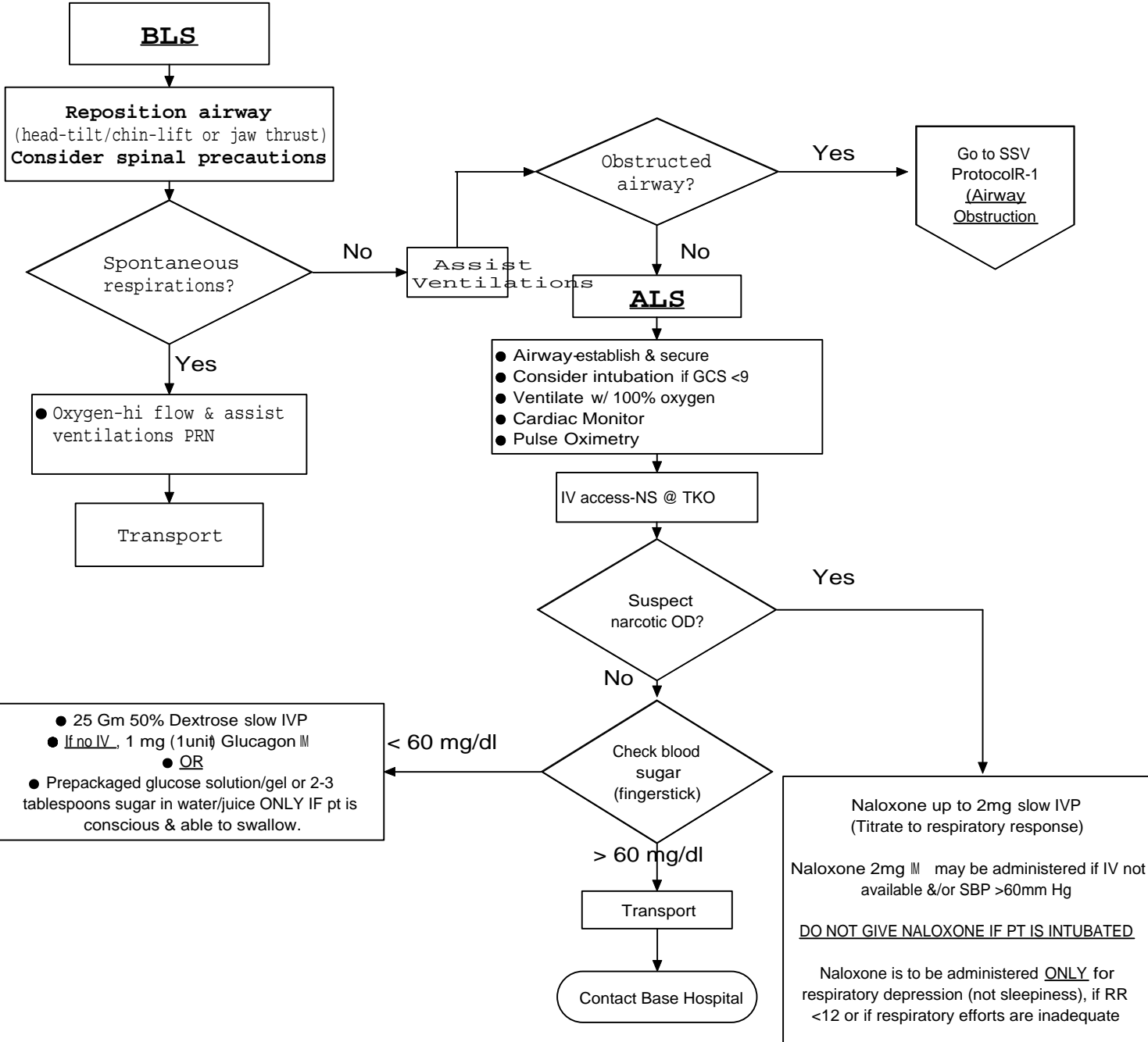


**SIERRA-SACRAMENTO VALLEY EMS AGENCY
ALS PROTOCOL-MEDICAL EMERGENCY**

**RESPIRATORY
REFERENCE NO. R-2**

SUBJECT: RESPIRATORY ARREST

TRANSPORT IMMEDIATELY TO CLOSEST APPROPRIATE FACILITY IF UNABLE TO CLEAR OBSTRUCTION OR OTHERWISE ESTABLISH AN AIRWAY



Effective Date: 01/01/08
Next Review Date: 12/2010
Approved by:

Date last reviewed revised: 12/04/07
Page 1 of 1

William J. Koenig, MD
S-SV EMS Medical Director

Victoria Pinette
S-SV EMS Regional Executive Director