

**SIERRA-SACRAMENTO VALLEY EMS AGENCY
TREATMENT PROTOCOL-MEDICAL EMERGENCY**

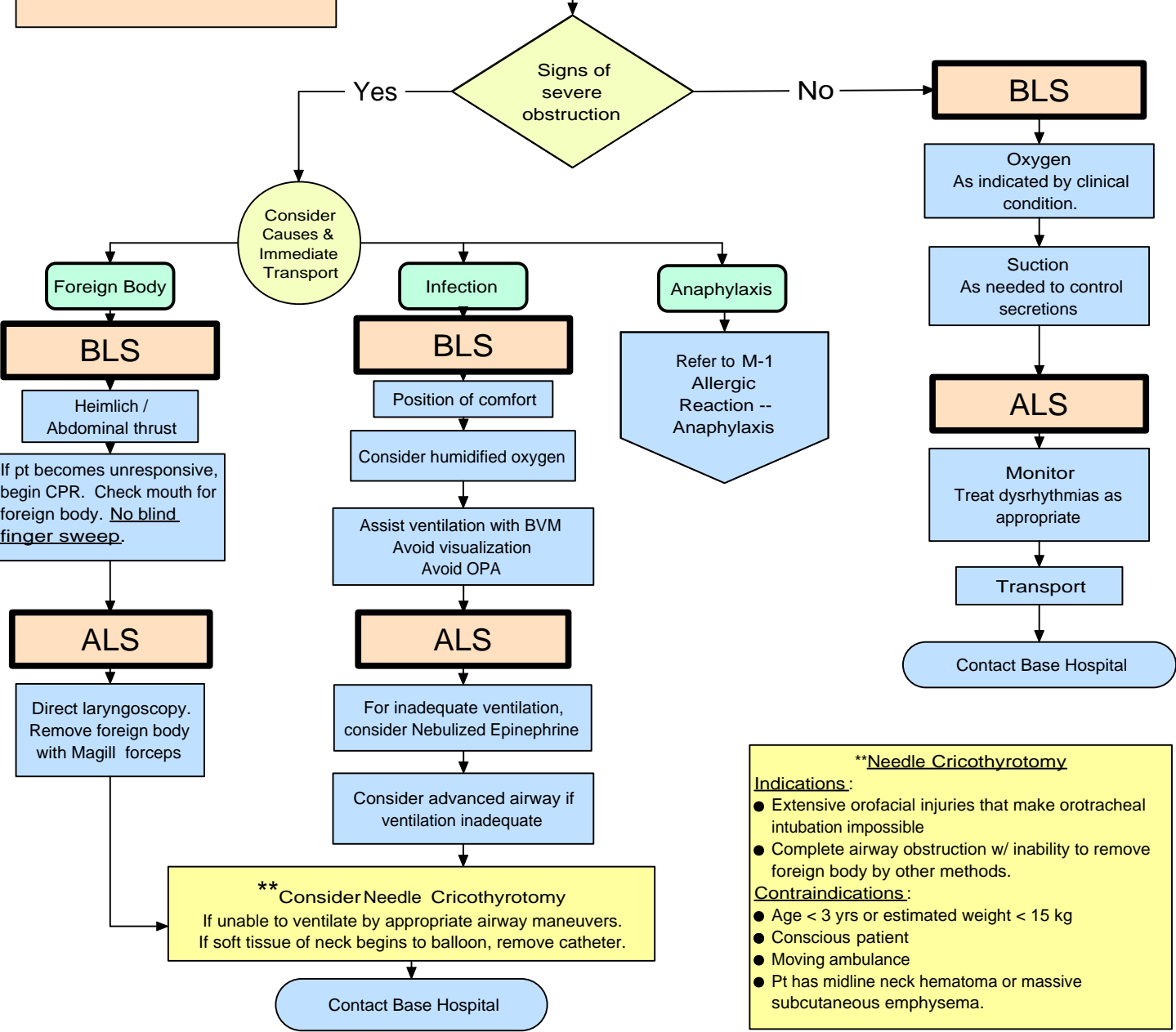
**RESPIRATORY
REFERENCE NO. R-1**

SUBJECT: AIRWAY OBSTRUCTION

Signs of severe obstruction:
 *Poor air exchange
 *Increased breathing difficulty
 *Silent cough
 *Cyanosis
 *Inability to speak/breathe

BLS PRIORITIES

- ABCs
- Oxygen @ hi flow
- Be prepared to support ventilation with appropriate airway adjuncts.



Effective Date: 06/01/2009
 Next Review Date: 01/2011
 Approved by:

Date last reviewed revised: 04/09
 Page 1 of 1

Troy M. Falck, MD
 S-SV EMS Medical Director

Victoria Pinette
 S-SV EMS Regional Executive Director