

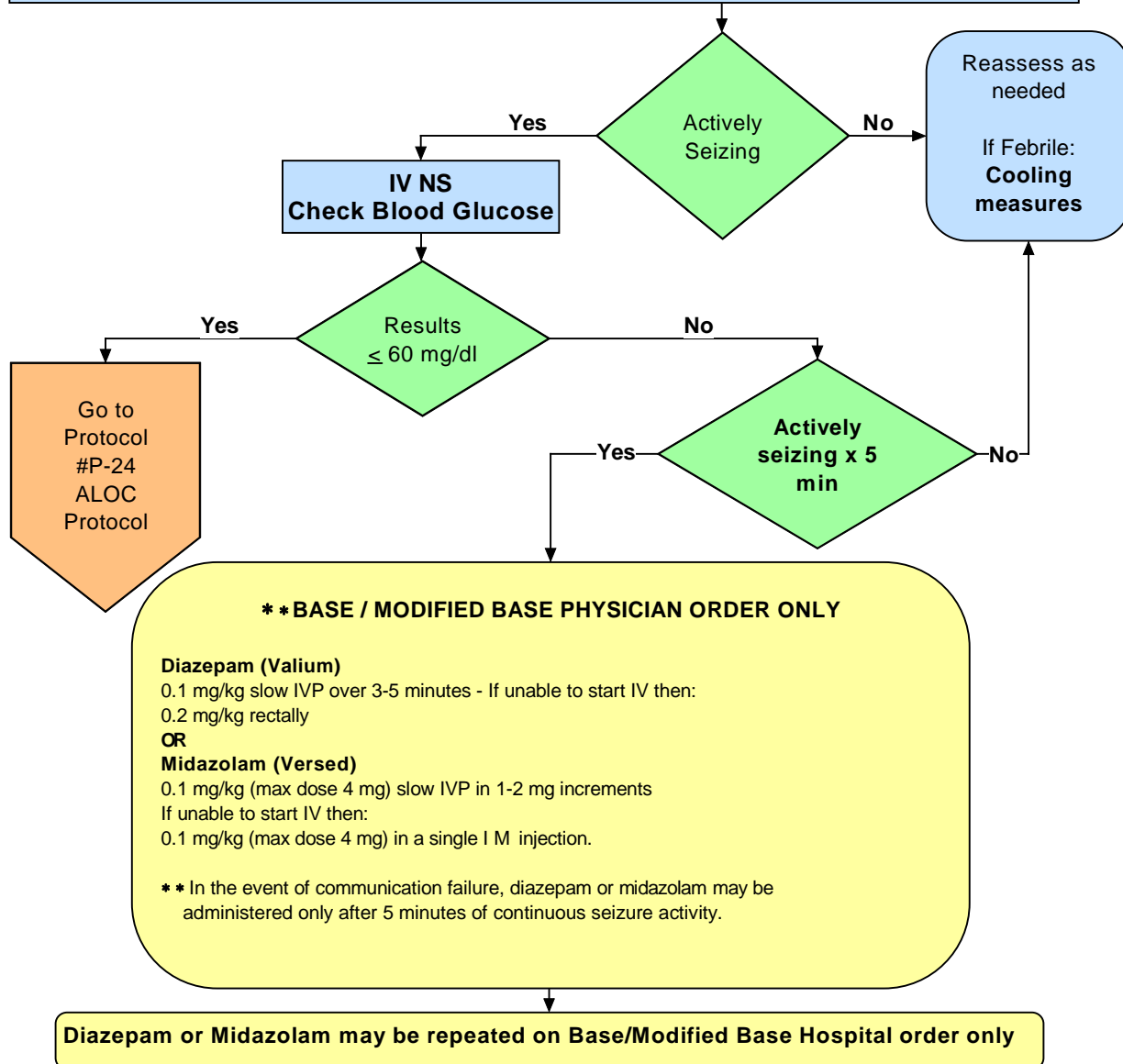
**SIERRA-SACRAMENTO VALLEY EMS AGENCY
ALS PROTOCOL-MEDICAL EMERGENCY**

**PEDIATRIC
REFERENCE NO. P-26**

SUBJECT: SEIZURE

- Only Prolonged or continuous seizure activity or repetitive seizures require ALS intervention.
- **Cooling Measures:** Loosen clothing and/or remove outer clothing/blankets.
- **Use length based resuscitation tape** to determine drug doses.
- **Note:** Perform endotracheal intubation only if BVM ventilation is unsuccessful or impossible

- **ABCs** - O₂ - high flow by mask, consider BVM early for altered LOC or respiratory distress
- **Note:** Perform endotracheal intubation only if BVM ventilation is unsuccessful or impossible
- **Monitor**
- **Pulse oximetry**



Effective Date: 02/01/07
Next Review Date: 09/09
Approved by:

William J. Koenig, MD
S-SV EMS Medical Director

Date last reviewed revised: 09/06
Page 1 of 1

Leonard R. Inch
S-SV EMS Regional Executive Director