

SIERRA-SACRAMENTO VALLEY EMS AGENCY

ALS PROTOCOL - MEDICAL EMERGENCY

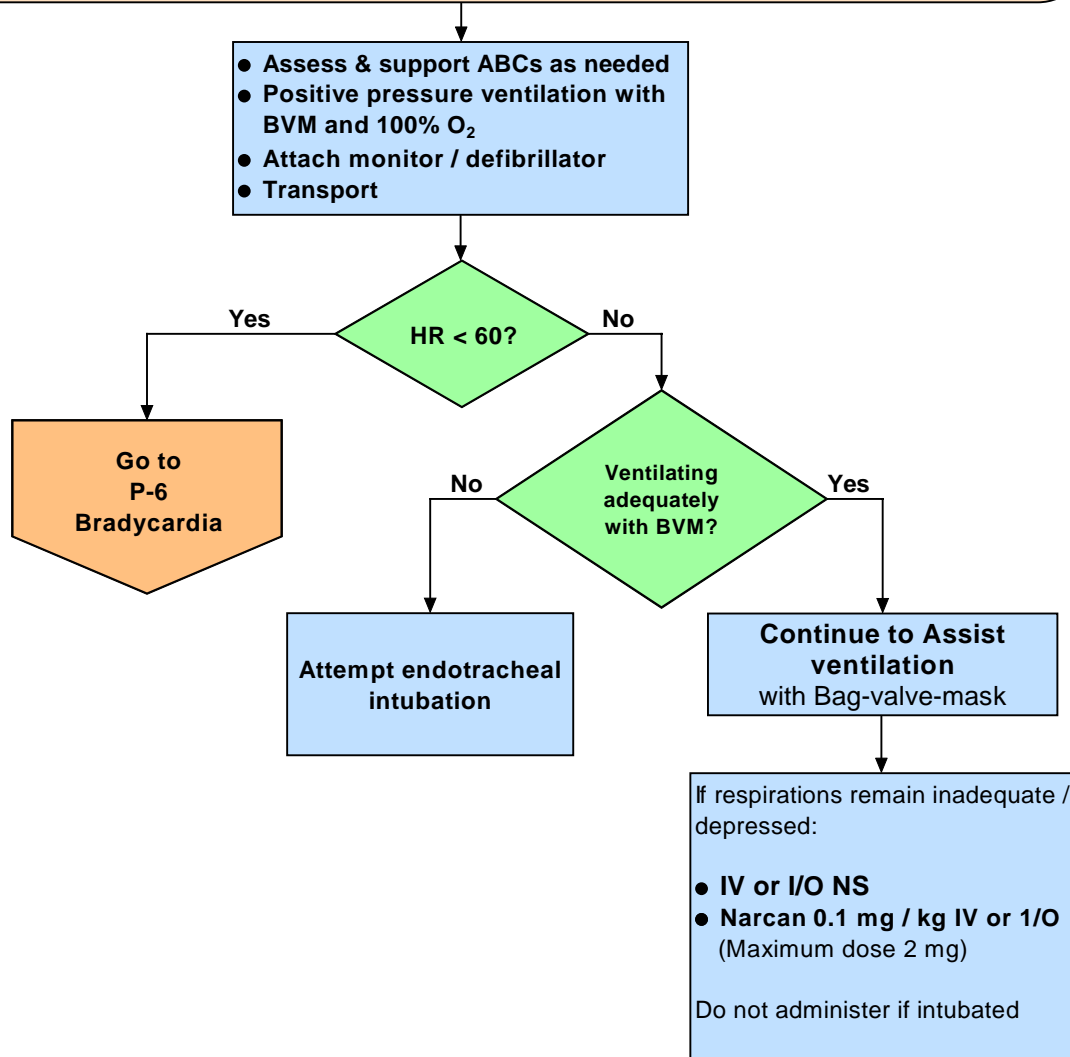
PEDIATRIC
REFERENCE NO. P-12

SUBJECT: RESPIRATORY ARREST

Routine Medical Care

Anticipate respiratory failure & possible respiratory arrest if you see any of the following:

- Increased respiratory rate, with signs of distress (eg, increased effort, nasal flaring, retractions, or grunting)
- An inadequate respiratory rate, effort, or chest excursion (eg, diminished breath sounds, gasping, and cyanosis), especially if mental status is depressed
- **Note:** Perform endotracheal intubation only if BVM ventilation is unsuccessful or impossible



Effective Date: 02/01/07
Next Review Date: 09/09
Approved by:

Date last reviewed revised: 09/06
Page 1 of 1

William J. Koenig, MD
S-SV EMS Medical Director

Leonard R. Inch
S-SV EMS Regional Executive Director