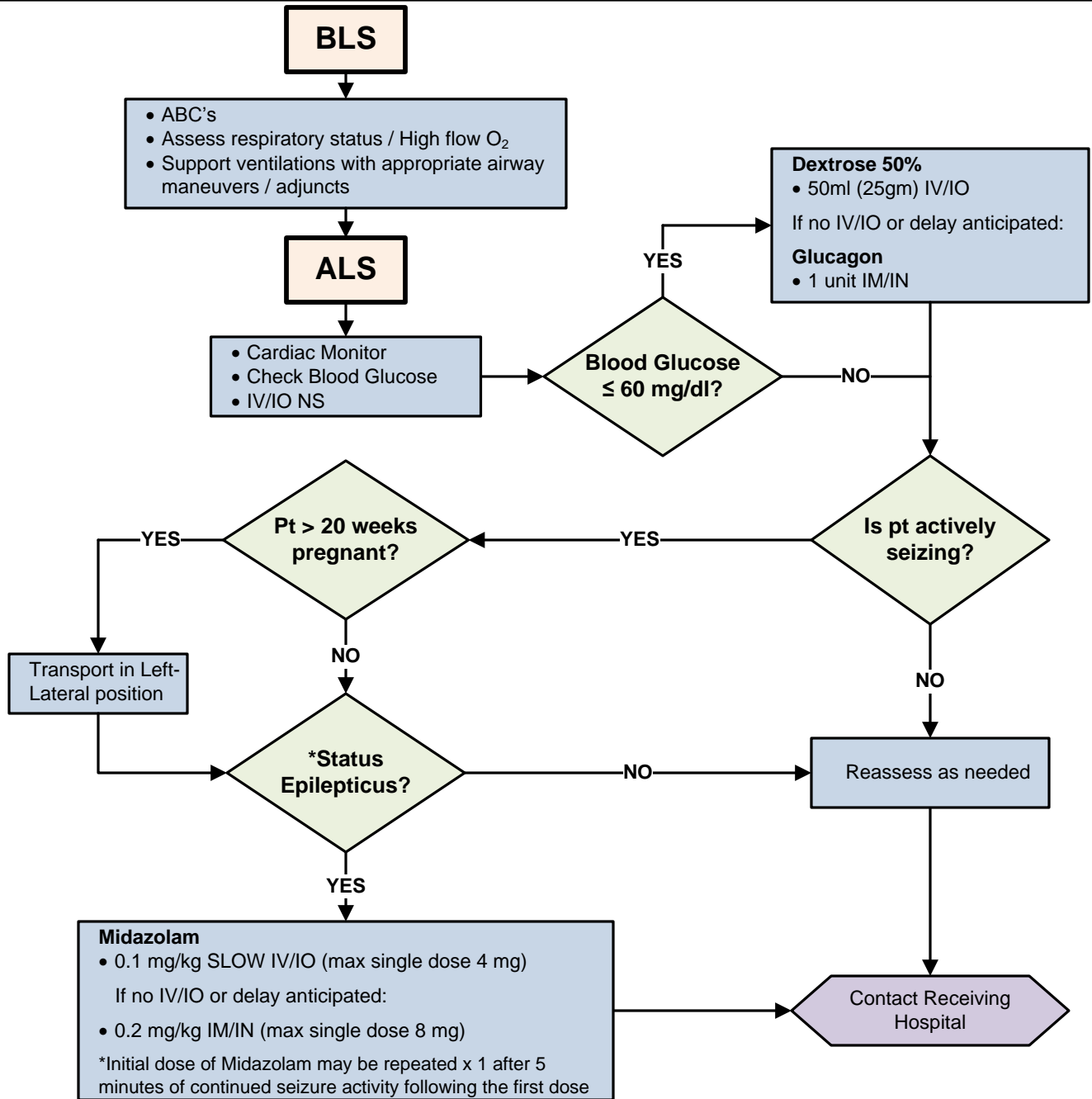




**SIERRA SACRAMENTO VALLEY EMS AGENCY**  
**TREATMENT PROTOCOL – MEDICAL EMERGENCY**

**NEUROLOGICAL**  
**REFERENCE NO. N-2**

**SUBJECT: SEIZURE**



\* **Status Epilepticus definition:** 2 or more seizures without any intervening periods of consciousness, or a single seizure lasting > 5 minutes.

Effective Date: 12/01/2011  
 Next Review Date: 09/2014  
 Approved by:

Date last reviewed revised: 09/11  
 Page 1 of 1

**SIGNATURE ON FILE**  
 S-SV EMS Medical Director

**SIGNATURE ON FILE**  
 S-SV EMS Regional Executive Director