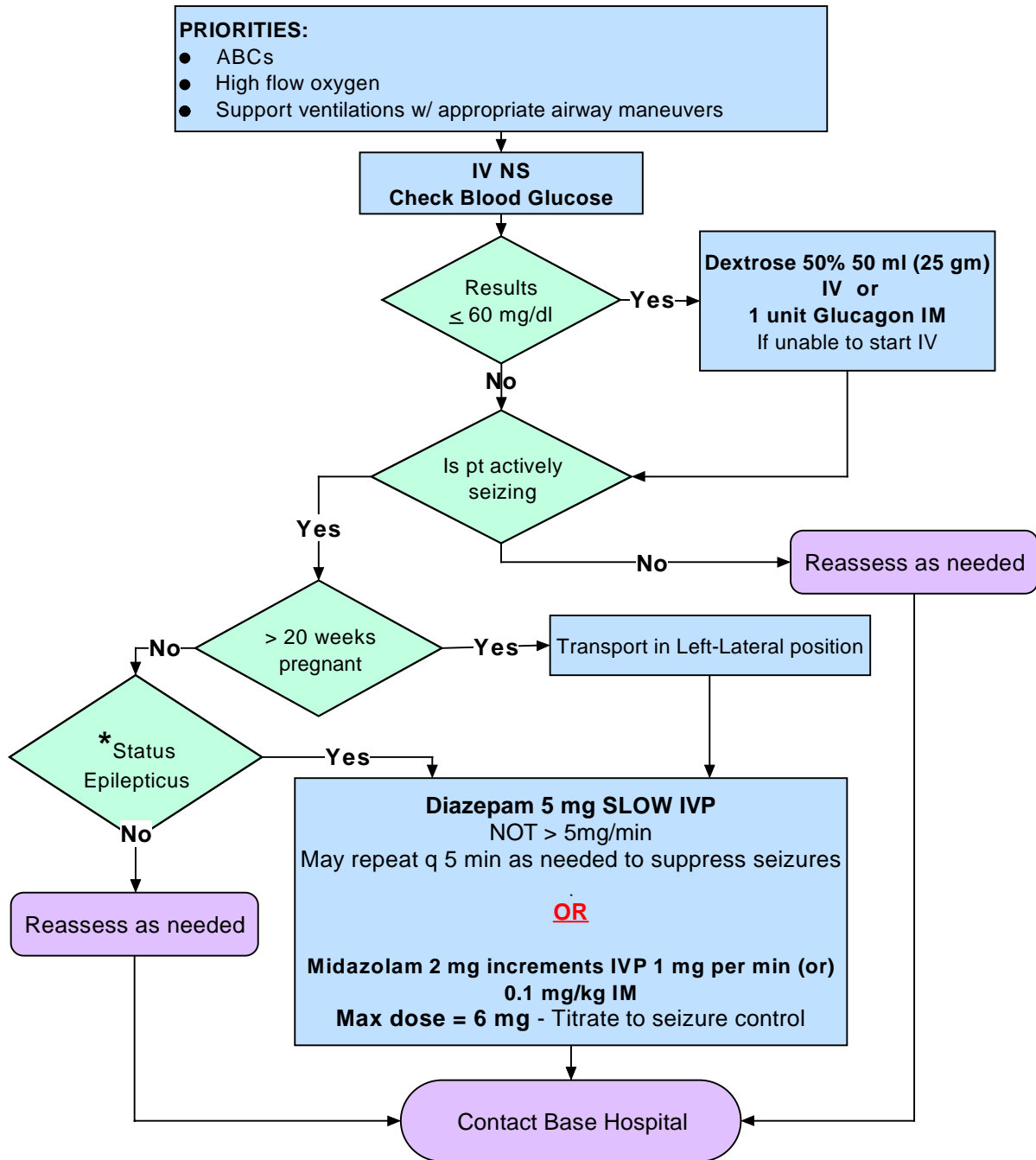


**SIERRA-SACRAMENTO VALLEY EMS AGENCY  
ALS PROTOCOL-MEDICAL EMERGENCY**

**NEUROLOGICAL  
REFERENCE NO. N-2**

**SUBJECT: SEIZURE**



\* **Status Epilepticus:** is defined as 2 or more seizures without any intervening periods of consciousness, or a single seizure lasting > 5 minutes.

Effective Date: 09/01/07  
Next Review Date: 07/2010  
Approved by:

Date last reviewed revised: 07/07  
Page 1 of 1

*William Koenig, MD*  
S-SV EMS Medical Director

*Victoria Pinette*  
S-SV EMS Regional Executive Director