

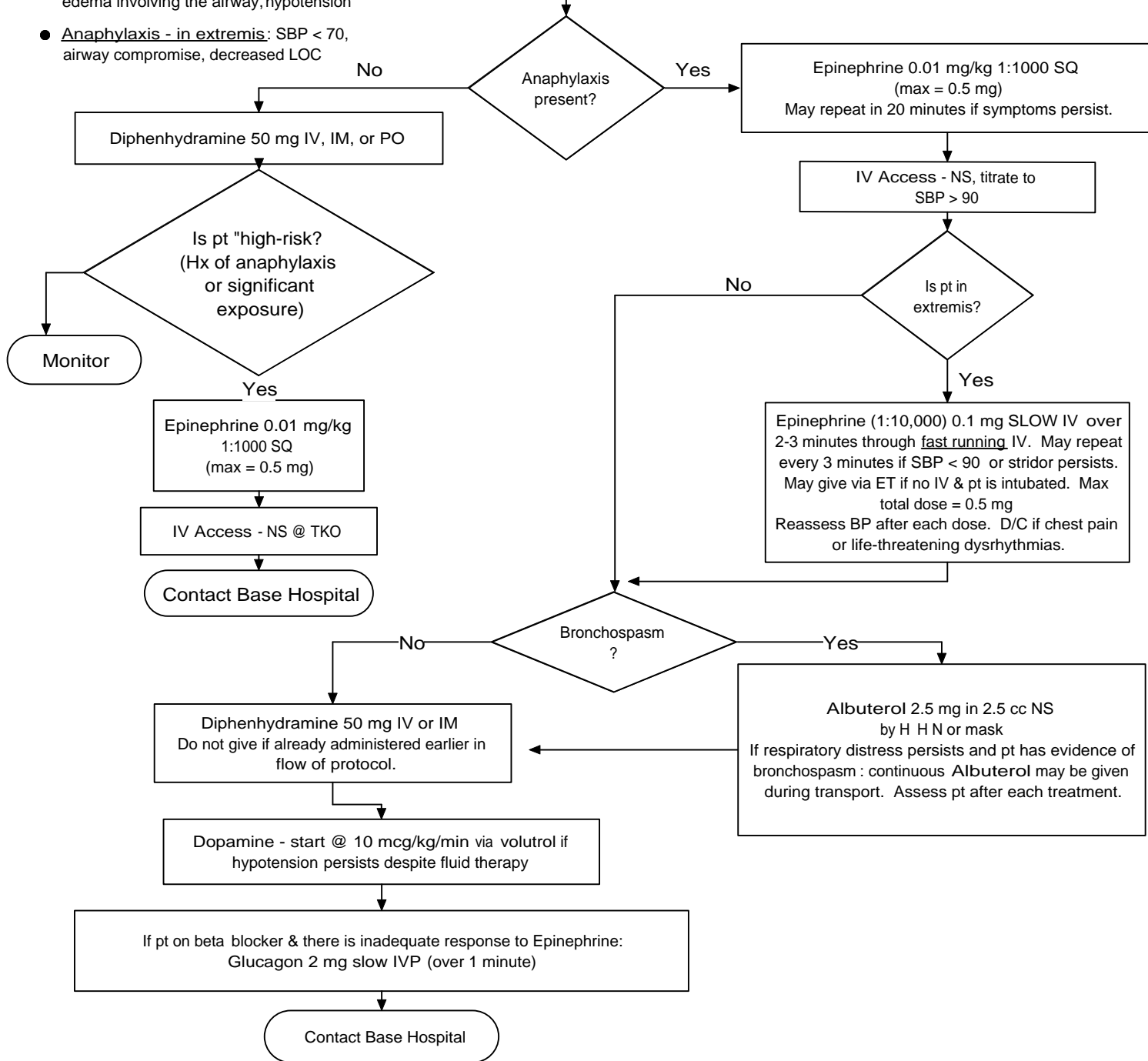
**SIERRA-SACRAMENTO VALLEY EMS AGENCY  
ALS PROTOCOL-MEDICAL EMERGENCY**

**MEDICAL  
REFERENCE NO. M - 1**

**SUBJECT: ALLERGIC REACTION / ANAPHYLAXIS**

- **Allergic reaction:** acute onset cutaneous reactions, e.g. hives, pruritus, flushing, rash, or angioedema not involving the airway
- **Anaphylaxis:** 1 or more symptoms: stridor, wheezing, hoarseness, edema involving the airway, hypotension
- **Anaphylaxis - in extremis:** SBP < 70, airway compromise, decreased LOC

- **BLS**
- **Airway** establish and secure.
- **Oxygen** high-flow
- Be prepared to support ventilation with appropriate airway adjuncts.
- Remove antigen source, if applicable
- **EpPen** - may assist with use



Effective Date: 01/01/08  
Next Review Date: 12/2010  
Approved by:

Date last reviewed revised: 12/07  
Page 1 of 1

*William J. Koenig, MD*  
S-SV EMS Medical Director

*Victoria Pinette*  
S-SV EMS Regional Executive Director