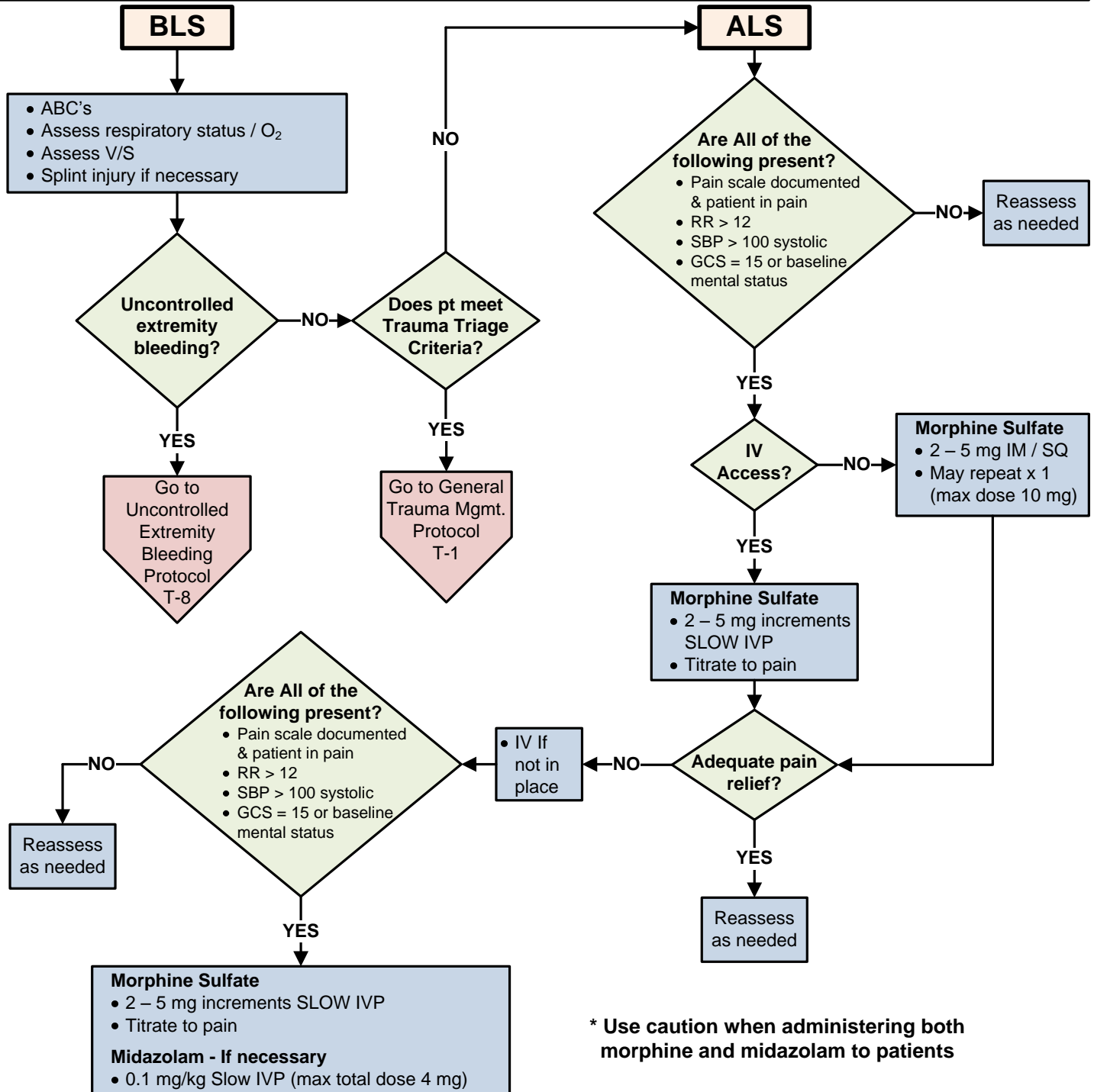




**SIERRA SACRAMENTO VALLEY EMS AGENCY
TREATMENT PROTOCOL – MEDICAL EMERGENCY**

**TRAUMA
REFERENCE NO. T-6 (LALS)**

SUBJECT: ISOLATED EXTREMITY INJURY – INCLUDING HIP OR SHOULDER INJURIES



*** Use caution when administering both morphine and midazolam to patients**

Effective Date: 07/01/2010
Next Review Date: 06/2012
Approved by:

Date last reviewed revised: 06/10
Page 1 of 1

SIGNATURE ON FILE
S-SV EMS Medical Director

SIGNATURE ON FILE
S-SV EMS Regional Executive Director