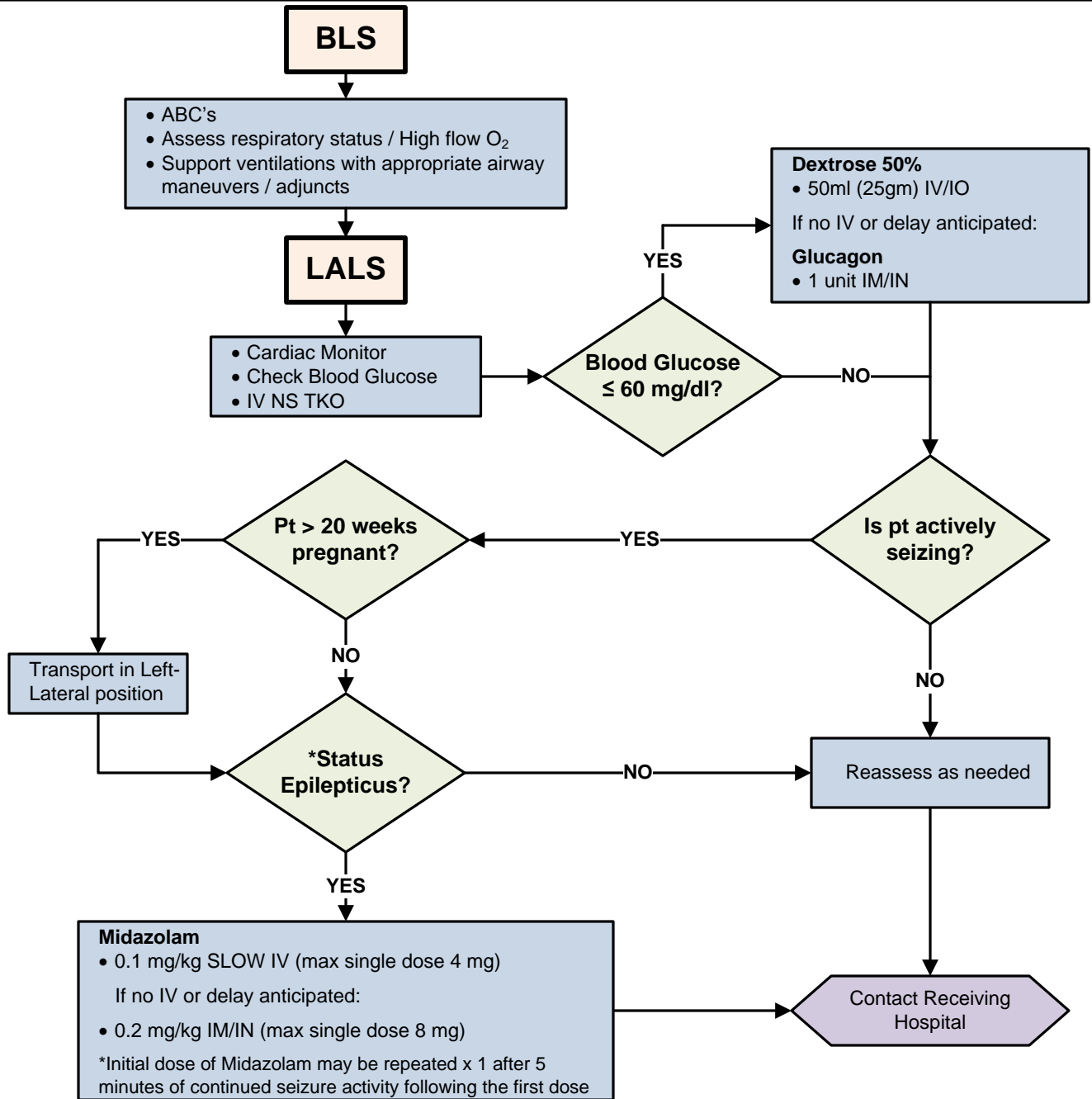




SIERRA SACRAMENTO VALLEY EMS AGENCY
TREATMENT PROTOCOL – MEDICAL EMERGENCY

NEUROLOGICAL
REFERENCE NO. N-2 (LALS)

SUBJECT: SEIZURE



* **Status Epilepticus definition:** 2 or more seizures without any intervening periods of consciousness, or a single seizure lasting > 5 minutes.

Effective Date: 12/01/2011
 Next Review Date: 09/2014
 Approved by:

Date last reviewed revised: 09/11
 Page 1 of 1

SIGNATURE ON FILE
 S-SV EMS Medical Director

SIGNATURE ON FILE
 S-SV EMS Regional Executive Director